

Getting to Know the STOXX Europe 600 Index

The STOXX Europe 600 Index serves as a key benchmark for the European equity market.

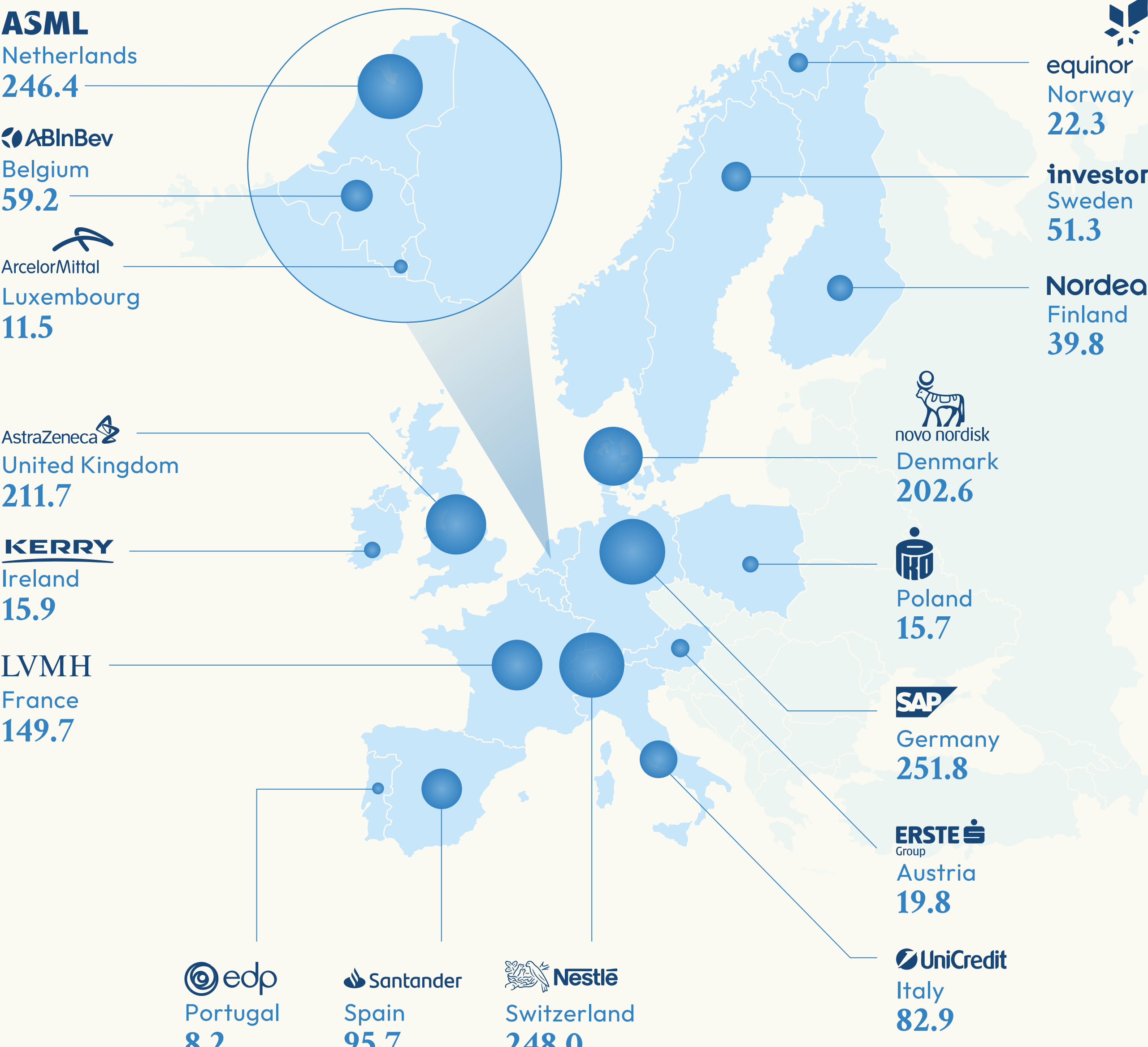


MAPPED

Largest STOXX Europe 600 Companies by Country

Market Cap, Billions of Euros

The STOXX Europe 600 is a stock market index that tracks 600 of the largest companies across 17 European countries.



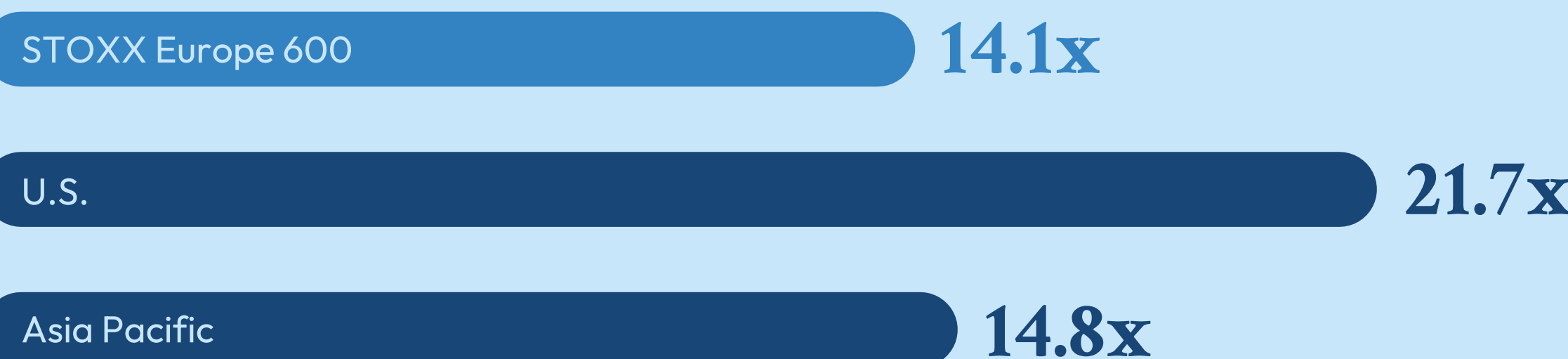
Source: STOXX. Data as of March 31st, 2025.

FORWARD PRICE-TO-EARNINGS (P/E)

Valuation of European Equities Is Low Compared to U.S. Equities

A forward Price-to-Earnings ratio shows how a company's current stock price compares to the profits it's expected to make per share in the next year.

A lower forward P/E ratio indicates a less expensive market valuation.

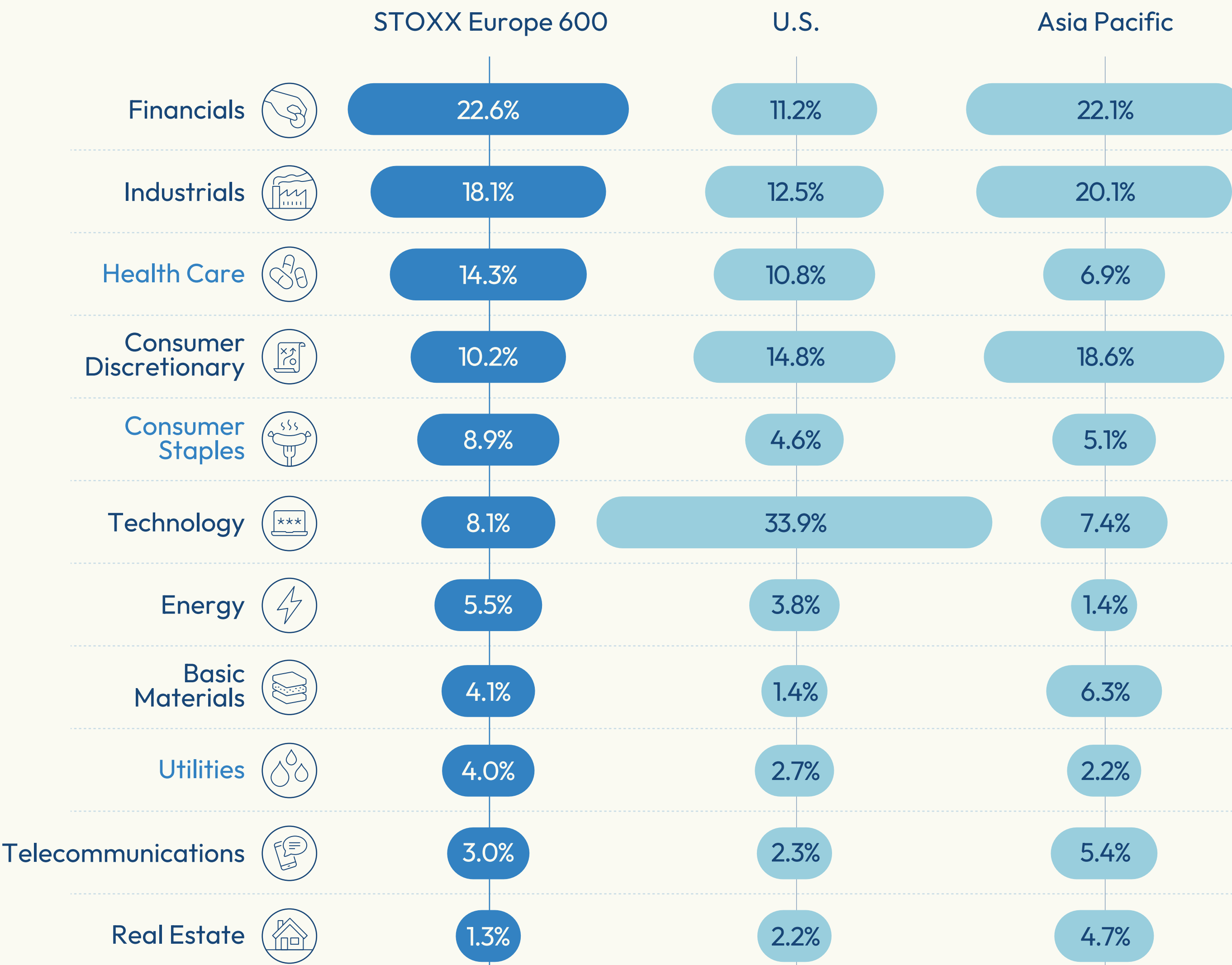


Source: STOXX. Data as of March 31st, 2025. The U.S. and Asia-Pacific are represented by STOXX USA 500 and STOXX Asia/Pacific 600 indices.

SECTOR WEIGHTINGS

Europe Versus the U.S. and Asia Pacific

Sector weightings of the STOXX Europe 600 skew towards **defensive sectors**, which tend to be more stable in times of slow economic growth and uncertainty.



Source: STOXX. Data as of March 31st, 2025. The U.S. and Asia-Pacific are represented by STOXX USA 500 and STOXX Asia/Pacific 600 indices.

STEP BY STEP

How Is the STOXX Europe 600 Constructed?

Simplified illustration, not all criteria are shown.

COUNTRY INDICES

An index is created for each developed European country by ranking stocks based on their free-float market value, selecting the top 95%, and weighting them by their size.



1



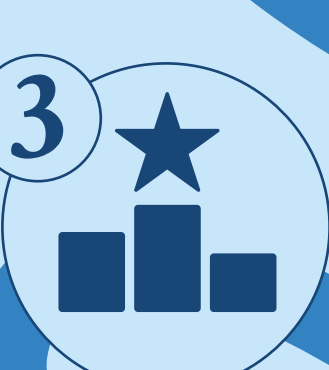
2

COMBINE THE INDICES

Merge all the country indexes into one big index for developed Europe.

TOP STOCKS

Rank all the stocks by size again and pick the 600 largest that also meet the minimum liquidity requirements.



3



4

FINALIZE WITH WEIGHTING

Weight these 600 stocks by their free-float market value to complete the index.

Which Indices Are in the STOXX Europe 600 Constellation?

i

Futures and options on the STOXX Europe 600 are among the most heavily traded index derivatives on Eurex, the leading European derivatives exchange.

STOXX Europe 600 Banks

Tracks the largest banks in Europe.

STOXX Europe Small 200

Tracks 200 small-sized companies in Europe.

STOXX Europe 600 ESG-X

The index applies standardized ESG exclusion screens.

STOXX Europe 50

Tracks the 50 largest blue-chip companies in Europe.

Source: STOXX.

The STOXX Europe 600 is the defining benchmark for European equities.

Find Out More

STOXX

Disclaimer: STOXX Ltd., ISS STOXX GmbH, ISS STOXX Index GmbH, Deutsche Börse Group and their licensors, research partners or data providers are not providing investment advice through the publication of indices or in connection therewith. None of their products or services recommends, endorses, approves or otherwise expresses any opinion regarding any issuer, securities, financial products or trading strategies. In particular, the inclusion of a company in an index, its weighting, or the exclusion of a company from an index, does not in any way reflect an opinion of STOXX Ltd., ISS STOXX GmbH, ISS STOXX Index GmbH, Deutsche Börse Group or their licensors, research partners or data providers on any other indices supported by STOXX are in no way sponsored, endorsed, sold or promoted by STOXX Ltd., ISS STOXX GmbH, ISS STOXX Index GmbH, Deutsche Börse Group or their licensors, research partners or data providers. Published in June 2025.