

# Monthly Index News

December 2024



## Newsletter updates

We regularly update this newsletter to include or remove indices, and consider layout modifications. Four AI-based indices — [STOXX® Global AI Adopters and Applications](#), [STOXX® Global AI Infrastructure](#), [STOXX® Global Artificial Intelligence Innovators](#), and [STOXX® World AC AI Market Leaders](#) — were added to the Thematic indices section this month.

**Table of Contents**

**Featured index.....3**

**Benchmark indices .....4**

**World Equity indices .....5**

**DAX indices.....6**

**DAX ESG indices .....7**

**SRI indices .....8**

**ESG-X indices .....9**

**ESG and Sustainability indices ..... 11**

**Climate indices – Paris-Aligned Benchmark indices ..... 14**

**Climate indices – Climate Transition Benchmark indices ..... 12**

**Biodiversity indices..... 13**

**Thematic indices ..... 14**

**Digital Asset indices ..... 17**

**Factor indices ..... 18**

**Industry Neutral Factor indices..... 19**

**Minimum Variance indices.....20**

**Dividend indices.....21**

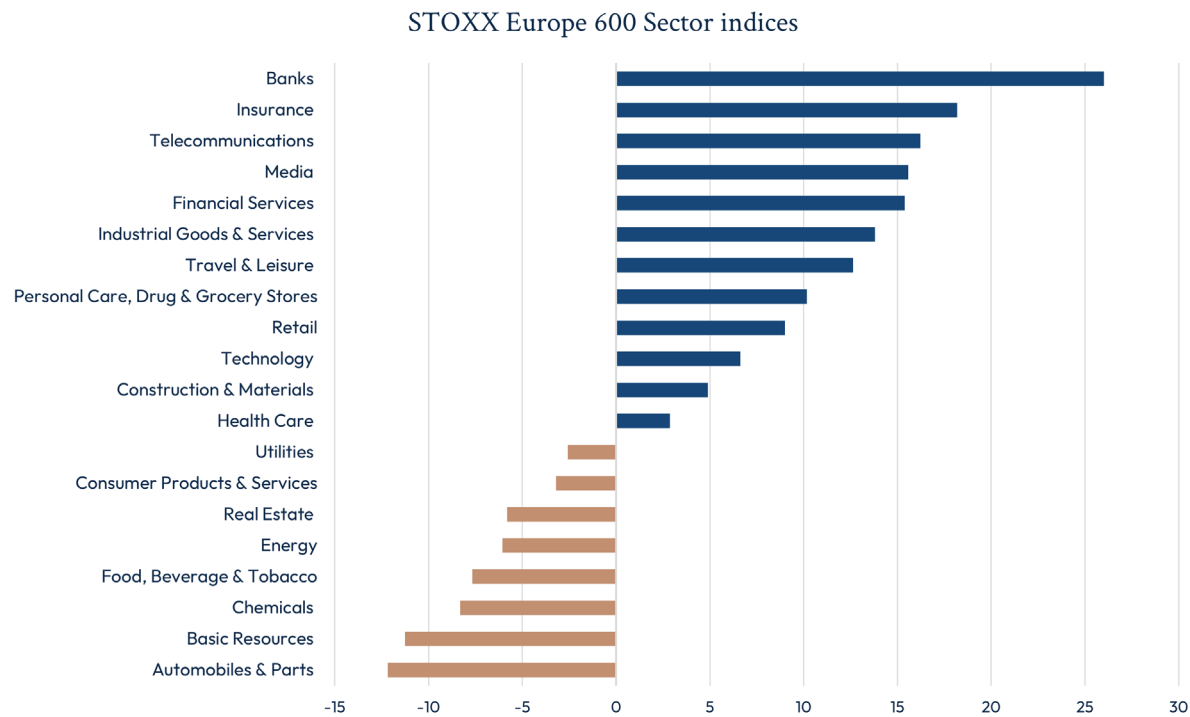
**Volatility indices .....22**

## Featured index

With struggling economies and falling interest rates, European bank stocks were unlikely winners in 2024.

The [STOXX® Europe 600 Banks](#) index climbed 26% last year, its best performance since the 34% logged in 2021. Only one other year since data begins in 1999 was better: the 47% jump registered in 2009 as the industry bounced back from the global financial crisis' meltdown. None of the other 19 ICB Supersectors did as well last year (Figure 1).

**Figure 1: 2024 performance**



Source: STOXX. Gross returns in euros through December 31, 2024.

Europe's banking sector has been helped by high capital ratios and stronger earnings as lenders cut costs and benefit from diversified businesses and still-high interest rates. At the bottom of the 2024 performance ranking, the [STOXX® Europe 600 Automobiles & Parts](#) index struggled with lagging demand for cars from China and poor sales of electric vehicles.

Due to its cyclicity and sensitivity to markets and the economy, the banking sector has traditionally been key in European portfolios. Futures on the banking sector indices are the most popular sector derivatives listed on Eurex. Over 2 million futures tracking the STOXX Europe 600 Banks index traded last year, while 55 million futures on the [EURO STOXX® Banks](#) index exchanged hands.

## Benchmark indices

### Key points

Stocks dropped in December, paring global indices' double-digit returns in 2024.

The [STOXX® Global 1800 index](#) fell 2.7% last month when measured in US dollars and including dividends, taking its 2024 gain to 18.8%. The global benchmark rose 26.7% in euros over the year as the greenback climbed 6.3% against the common currency.

The Eurozone's [EURO STOXX 50®](#) added 1.9% in euros in December on a total-return basis (11.9% for 2024). The pan-European [STOXX® Europe 600](#) fell 0.4% (+9.5%). The [STOXX® North America 600](#) slid 2.9% in dollars (+24.8%) while the [STOXX® USA 500](#) lost 2.8% (+25.5%). The [STOXX® Asia/Pacific 600](#) shed 1.9% in dollars (+6.4%).

### Risk and return characteristics

|                             | Return (%) |      |      |      |      |      | Annualized volatility (%) |      |      |      |      |      |
|-----------------------------|------------|------|------|------|------|------|---------------------------|------|------|------|------|------|
|                             | EUR        |      |      | USD  |      |      | EUR                       |      |      | USD  |      |      |
|                             | 1M         | YTD  | 1Y   | 1M   | YTD  | 1Y   | 1M                        | YTD  | 1Y   | 1M   | YTD  | 1Y   |
| 1. EURO STOXX 50            | 1.9        | 11.9 | 11.9 | 0.0  | 4.9  | 4.9  | 9.8                       | 13.5 | 13.5 | 13.8 | 15.8 | 15.8 |
| 2. STOXX Europe 600         | -0.4       | 9.5  | 9.5  | -2.4 | 2.6  | 2.6  | 8.7                       | 10.5 | 10.5 | 12.4 | 12.7 | 12.7 |
| 3. STOXX Global 1800        | -0.8       | 26.7 | 26.7 | -2.7 | 18.8 | 18.8 | 11.2                      | 11.6 | 11.6 | 11.5 | 10.9 | 10.9 |
| 4. STOXX Global 1800 ex USA | -0.6       | 11.6 | 11.6 | -2.5 | 4.6  | 4.6  | 8.9                       | 10.5 | 10.5 | 11.7 | 11.9 | 11.9 |
| 5. STOXX USA 500            | -0.8       | 33.9 | 33.9 | -2.8 | 25.5 | 25.5 | 15.2                      | 14.3 | 14.3 | 14.9 | 12.9 | 12.9 |
| 6. STOXX USA 900            | -1.1       | 33.0 | 33.0 | -3.1 | 24.7 | 24.7 | 15.4                      | 14.2 | 14.2 | 15.0 | 13.0 | 13.0 |
| 7. STOXX North America 600  | -1.0       | 33.1 | 33.1 | -2.9 | 24.8 | 24.8 | 15.1                      | 14.0 | 14.0 | 14.7 | 12.7 | 12.7 |
| 8. STOXX Asia/Pacific 600   | 0.1        | 13.5 | 13.5 | -1.9 | 6.4  | 6.4  | 14.7                      | 18.6 | 18.6 | 15.9 | 18.6 | 18.6 |

Risk and return performance figures for STOXX Benchmark indices, gross return. Data as of December 31, 2024. Source: STOXX.

### Index and volatility performance

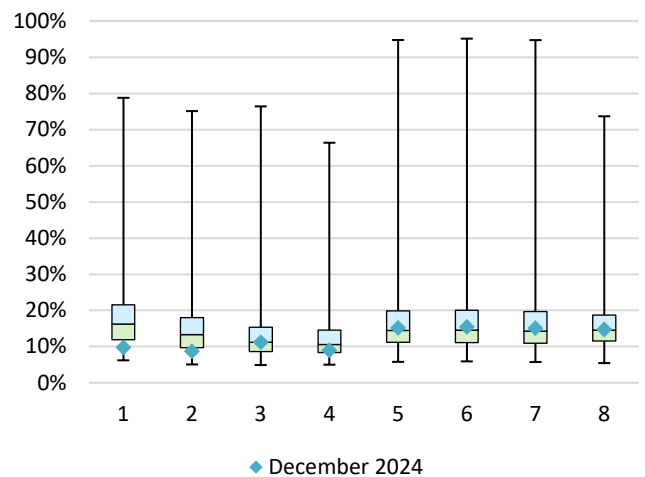
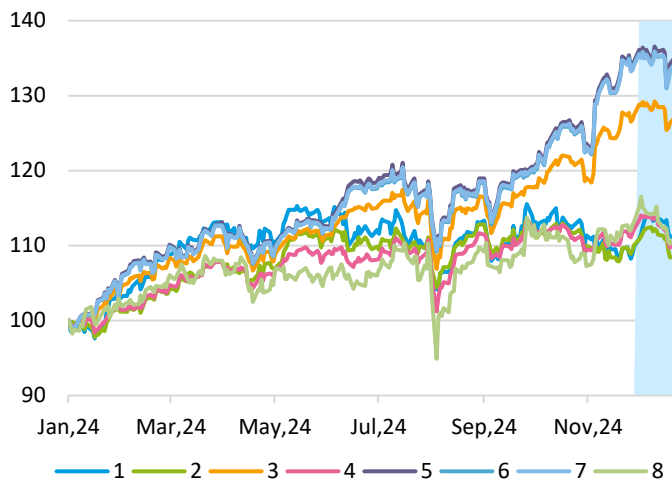


Figure 1: EUR gross return index performance. Jan. 2024 – Dec. 2024. Shaded area: Dec. 2024. Source: STOXX.

Figure 2: Monthly annualized volatility analysis, EUR gross return. Jan. 2004 – Dec. 2024. Source: STOXX.

## World Equity indices

### Key points

The [STOXX® World AC](#) fell 2.2% last month (+17.9% in 2024). The [STOXX® Developed World](#) lost 2.5% (+19%) and the [STOXX® Emerging Markets](#) fell 0.2% (+8.5%).

The [STOXX® World Equity](#) indices are a modular suite that allows investors to flexibly build portfolios covering a broad and liquid universe of markets. Introduced in 2022, the STOXX World Equity indices comprise STOXX's largest pool of markets and stocks to date. With turnover and market-capitalization filters in the stock selection to ensure they are tradable and representative, the indices track the performance of large-, mid- and small-cap stocks from a full range of developed and emerging markets, as well as derived sector strategies.

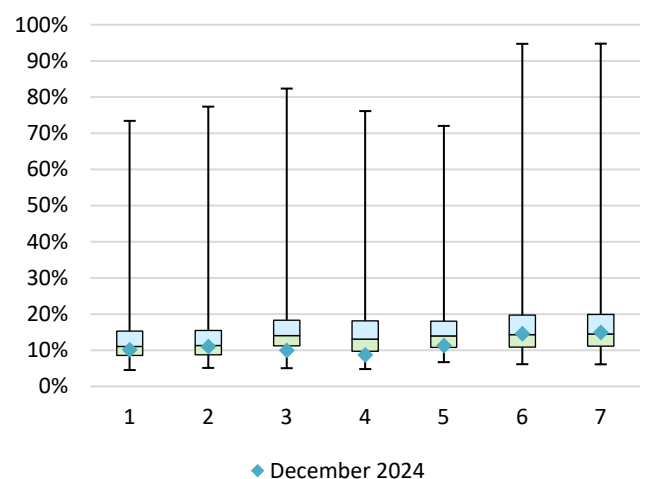
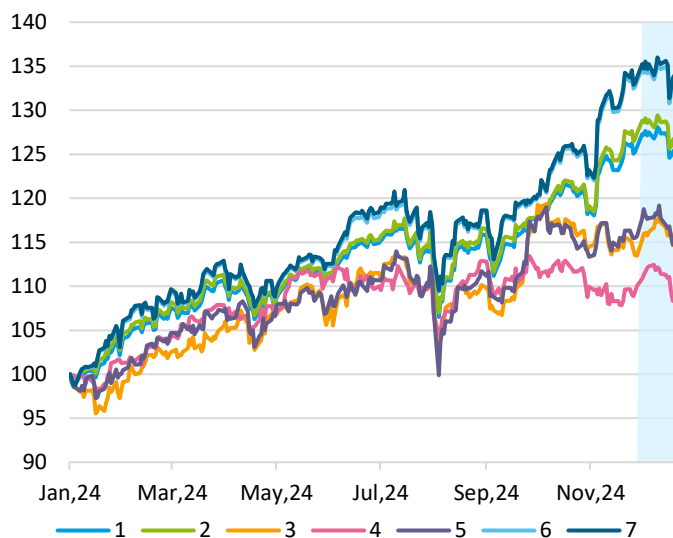
There are two defining features of the STOXX World Equity indices: their exhaustive scope and their modularity. The suite can be used as the basis to create highly targeted solutions in the three focus areas of sustainability, factors and thematic.

### Risk and return characteristics

|                           | Return (%) |      |      |      |      |      | Annualized volatility (%) |      |      |      |      |      |
|---------------------------|------------|------|------|------|------|------|---------------------------|------|------|------|------|------|
|                           | EUR        |      |      | USD  |      |      | EUR                       |      |      | USD  |      |      |
|                           | 1M         | YTD  | 1Y   | 1M   | YTD  | 1Y   | 1M                        | YTD  | 1Y   | 1M   | YTD  | 1Y   |
| 1. STOXX World AC         | -0.3       | 25.7 | 25.7 | -2.2 | 17.9 | 17.9 | 10.1                      | 11.2 | 11.2 | 10.4 | 10.4 | 10.4 |
| 2. STOXX Developed World  | -0.5       | 27.0 | 27.0 | -2.5 | 19.0 | 19.0 | 11.1                      | 11.7 | 11.7 | 11.4 | 10.9 | 10.9 |
| 3. STOXX Emerging Markets | 1.8        | 15.8 | 15.8 | -0.2 | 8.5  | 8.5  | 10.0                      | 13.6 | 13.6 | 9.3  | 13.1 | 13.1 |
| 4. STOXX Developed Europe | -0.4       | 9.5  | 9.5  | -2.4 | 2.6  | 2.6  | 8.8                       | 10.4 | 10.4 | 12.1 | 12.5 | 12.5 |
| 5. STOXX Asia Pacific AC  | 1.0        | 17.1 | 17.1 | -1.0 | 9.8  | 9.8  | 11.3                      | 15.0 | 15.0 | 11.4 | 14.8 | 14.8 |
| 6. STOXX North America    | -0.6       | 32.8 | 32.8 | -2.6 | 24.5 | 24.5 | 14.6                      | 13.9 | 13.9 | 14.3 | 12.6 | 12.6 |
| 7. STOXX US               | -0.5       | 33.4 | 33.4 | -2.5 | 25.0 | 25.0 | 14.9                      | 14.2 | 14.2 | 14.6 | 12.9 | 12.9 |

Risk and return performance figures for STOXX World Equity indices, gross return. Data as of December 31, 2024. Source: STOXX.

### Index and volatility performance



## DAX indices

### Key points

Germany's DAX family is led by [DAX®](#), the blue-chip benchmark. [MDAX®](#) and [SDAX®](#) gauge, respectively, the performance of the country's mid- and small-caps. [TecDAX®](#) tracks German technology companies. [HDAX®](#) groups all equities that belong to either DAX, MDAX or TecDAX.

Returns for the suite were mixed in the month that ended. The benchmark DAX climbed 1.4%.

### Risk and return characteristics

|           | (EUR) Return (%) |      |      | (EUR) Annualized volatility (%) |      |      |
|-----------|------------------|------|------|---------------------------------|------|------|
|           | 1M               | YTD  | 1Y   | 1M                              | YTD  | 1Y   |
| 1. DAX    | 1.4              | 18.8 | 18.8 | 10.5                            | 12.2 | 12.2 |
| 2. MDAX   | -2.8             | -5.7 | -5.7 | 13.9                            | 13.7 | 13.7 |
| 3. SDAX   | 1.1              | -1.8 | -1.8 | 14.1                            | 15.3 | 15.3 |
| 4. TecDAX | -0.4             | 2.4  | 2.4  | 12.6                            | 14.5 | 14.5 |
| 5. HDAX   | 0.9              | 15.4 | 15.4 | 10.1                            | 12.1 | 12.1 |

Risk and return performance figures for DAX indices, gross return. Data as of December 31, 2024. Source: STOXX.

### Index and volatility performance

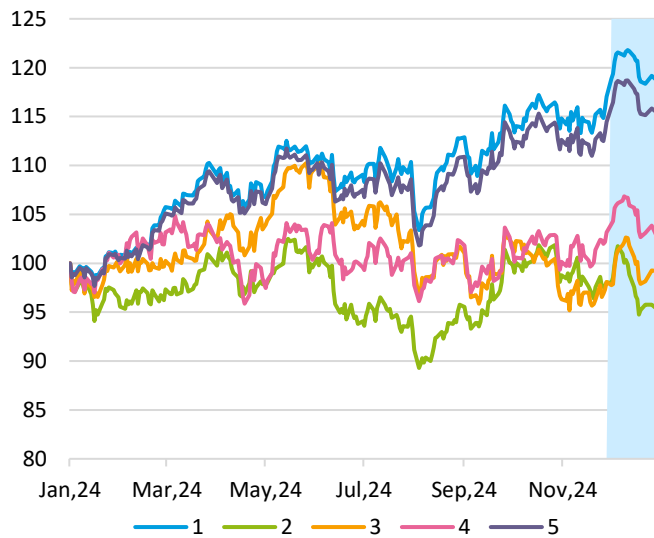


Figure 5: EUR gross return index performance. Jan. 2024 – Dec. 2024. Shaded area: Dec. 2024. Source: STOXX.

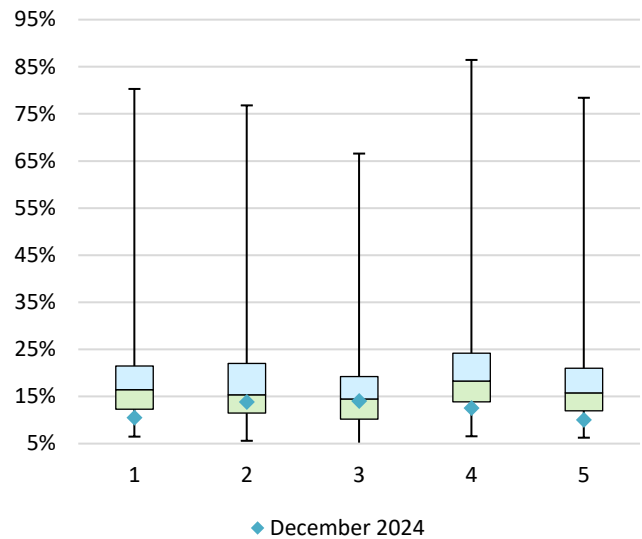


Figure 6: Monthly annualized volatility analysis, EUR gross return. Jan. 2024 – Dec. 2024. Source: STOXX.

## DAX ESG indices

### Key points

STOXX offers several sustainable options as indices for German equities, including [DAX® 50 ESG](#), [DAX® 30 ESG](#), [DAX® ESG Target](#), [DAX® ESG Screened](#), [DAX® 50 ESG+](#), [MDAX® ESG Screened](#) and [MDAX® ESG+](#).

### Risk and return characteristics

|                      | (EUR) Return (%) |      |      | (EUR) Annualized volatility (%) |      |      |
|----------------------|------------------|------|------|---------------------------------|------|------|
|                      | 1M               | YTD  | 1Y   | 1M                              | YTD  | 1Y   |
| 1. DAX 50 ESG        | 1.1              | 15.7 | 15.7 | 10.3                            | 12.2 | 12.2 |
| 2. DAX 30 ESG        | 0.7              | 24.0 | 24.0 | 10.9                            | 11.9 | 11.9 |
| 3. DAX ESG Target    | 1.1              | 19.4 | 19.4 | 10.2                            | 11.8 | 11.8 |
| 4. DAX ESG Screened  | 1.1              | 16.8 | 16.8 | 10.2                            | 12.2 | 12.2 |
| 5. DAX 50 ESG+       | 1.1              | 16.7 | 16.7 | 10.2                            | 12.0 | 12.0 |
| 6. MDAX ESG Screened | -2.8             | -6.3 | -6.3 | 14.1                            | 13.9 | 13.9 |
| 7. MDAX ESG+         | -0.6             | -6.2 | -6.2 | 13.7                            | 13.5 | 13.5 |

Risk and return performance figures for DAX indices, gross return. Data as of December 31, 2024. Source: STOXX.

### Index and volatility performance

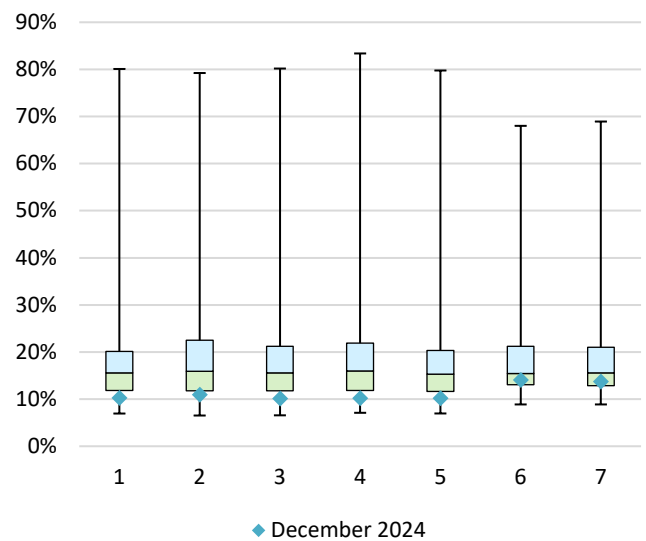
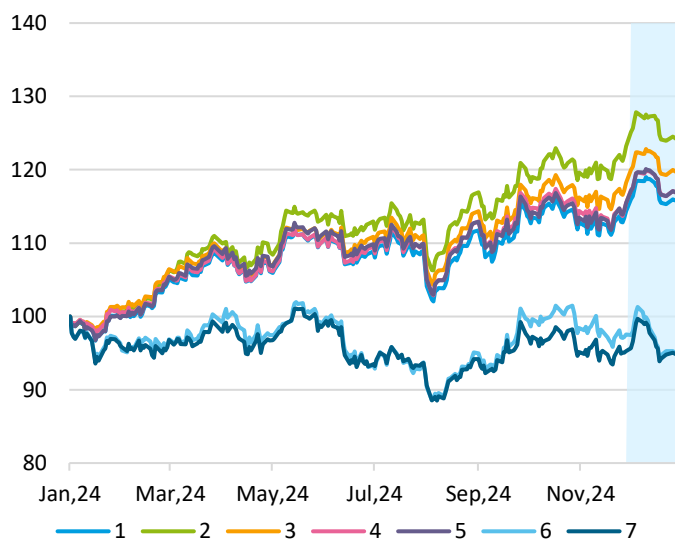


Figure 7: EUR gross return index performance. Jan. 2024 – Dec. 2024. Shaded area: Dec. 2024. Source: STOXX.

Figure 8: Monthly annualized volatility analysis, EUR gross return. Mar. 2020 – Dec. 2024. Source: STOXX.



## SRI indices

### Key points

The [STOXX® Global 1800 SRI](#) index outperformed the benchmark last month.

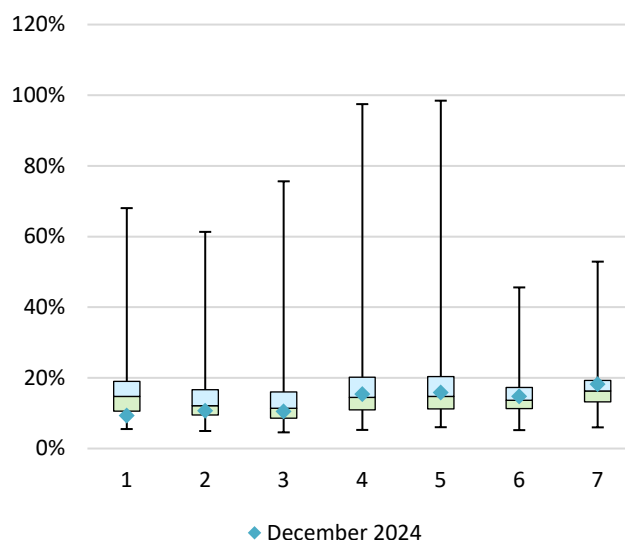
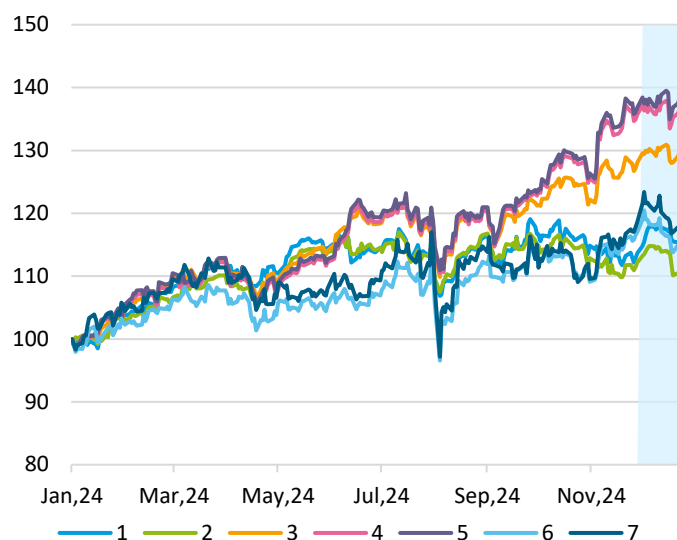
The [STOXX® SRI \(Socially Responsible Investing\) indices](#) apply a set of involvement, carbon emission intensity and compliance screens, and additionally track the best ESG performers in each industry group within a selection of STOXX benchmarks.

### Risk and return characteristics

|                                | Return (%) |      |      |      |      |      | Annualized volatility (%) |      |      |      |      |      |
|--------------------------------|------------|------|------|------|------|------|---------------------------|------|------|------|------|------|
|                                | EUR        |      |      | USD  |      |      | EUR                       |      |      | USD  |      |      |
|                                | 1M         | YTD  | 1Y   | 1M   | YTD  | 1Y   | 1M                        | YTD  | 1Y   | 1M   | YTD  | 1Y   |
| 1. EURO STOXX SRI              | 2.2        | 16.1 | 16.1 | 0.2  | 8.9  | 8.9  | 9.3                       | 12.6 | 12.6 | 13.1 | 14.9 | 14.9 |
| 2. STOXX Europe 600 SRI        | -0.8       | 11.1 | 11.1 | -2.8 | 4.1  | 4.1  | 10.7                      | 11.3 | 11.3 | 13.5 | 13.2 | 13.2 |
| 3. STOXX Global 1800 SRI       | 0.0        | 28.3 | 28.3 | -2.0 | 20.2 | 20.2 | 10.5                      | 12.9 | 12.9 | 11.9 | 12.8 | 12.8 |
| 4. STOXX North America 600 SRI | -0.8       | 35.0 | 35.0 | -2.8 | 26.5 | 26.5 | 15.3                      | 15.5 | 15.5 | 15.5 | 14.6 | 14.6 |
| 5. STOXX USA 500 SRI           | -0.4       | 36.6 | 36.6 | -2.4 | 28.0 | 28.0 | 15.8                      | 15.9 | 15.9 | 16.1 | 14.9 | 14.9 |
| 6. STOXX Asia/Pacific 600 SRI  | -0.3       | 17.0 | 17.0 | -2.2 | 9.6  | 9.6  | 14.7                      | 19.4 | 19.4 | 16.1 | 19.4 | 19.4 |
| 7. STOXX Japan 600 SRI         | 1.4        | 20.7 | 20.7 | -0.6 | 13.1 | 13.1 | 18.2                      | 23.4 | 23.4 | 18.8 | 23.2 | 23.2 |

Risk and return performance figures for STOXX ESG SRI indices, gross return. Data as of December 31, 2024. Source: STOXX.

### Index and volatility performance



## ESG-X indices

### Key points

The [STOXX® Global 1800 ESG-X](#) outperformed its benchmark slightly.

The [STOXX ESG-X indices](#) are versions of traditional, market capitalization-weighted benchmarks that observe [standard responsible exclusions](#). They incorporate basic norm- and product-based exclusion criteria to comply with ESG principles. Companies are excluded based on Sustainalytics' determination of non-compliance with their Global Standards Screening assessment or if they have a 'severe' ESG risk rating from the data provider. Companies involved in controversial weapons, small arms, military contracting, unconventional oil and gas, tobacco and thermal coal (extraction or use for power generation) are also removed.

### Risk and return characteristics

|                                  | Return (%) |      |      |      |      |      | Annualized volatility (%) |      |      |      |      |      |
|----------------------------------|------------|------|------|------|------|------|---------------------------|------|------|------|------|------|
|                                  | EUR        |      |      | USD  |      |      | EUR                       |      |      | USD  |      |      |
|                                  | 1M         | YTD  | 1Y   | 1M   | YTD  | 1Y   | 1M                        | YTD  | 1Y   | 1M   | YTD  | 1Y   |
| 1. EURO STOXX 50 ESG-X           | 2.0        | 12.2 | 12.2 | 0.0  | 5.2  | 5.2  | 10.0                      | 13.6 | 13.6 | 14.0 | 15.9 | 15.9 |
| 2. STOXX Europe 600 ESG-X        | -0.4       | 9.1  | 9.1  | -2.4 | 2.2  | 2.2  | 8.9                       | 10.5 | 10.5 | 12.6 | 12.7 | 12.7 |
| 3. STOXX Global 1800 ESG-X       | -0.5       | 27.1 | 27.1 | -2.5 | 19.1 | 19.1 | 11.6                      | 12.0 | 12.0 | 11.9 | 11.3 | 11.3 |
| 4. STOXX USA 500 ESG-X           | -0.5       | 34.5 | 34.5 | -2.4 | 26.0 | 26.0 | 15.7                      | 14.9 | 14.9 | 15.5 | 13.6 | 13.6 |
| 5. STOXX North America 600 ESG-X | -0.6       | 33.8 | 33.8 | -2.6 | 25.4 | 25.4 | 15.7                      | 14.6 | 14.6 | 15.3 | 13.4 | 13.4 |
| 6. STOXX Asia/Pacific 600 ESG-X  | 0.1        | 14.0 | 14.0 | -1.9 | 6.9  | 6.9  | 14.6                      | 18.5 | 18.5 | 16.0 | 18.6 | 18.6 |

Risk and return performance figures for STOXX ESG-X indices, gross return. Data as of December 31, 2024. Source: STOXX.

### Index and volatility performance

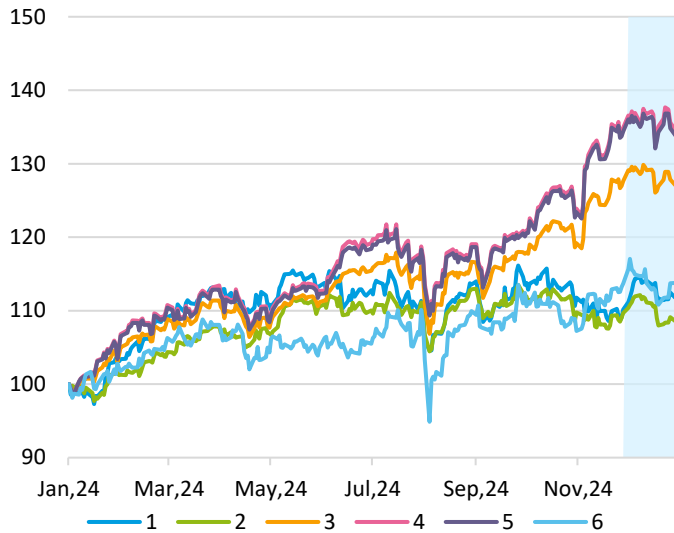


Figure 11: EUR gross return index performance. Jan. 2024 – Dec. 2024. Shaded area: Dec. 2024. Source: STOXX.

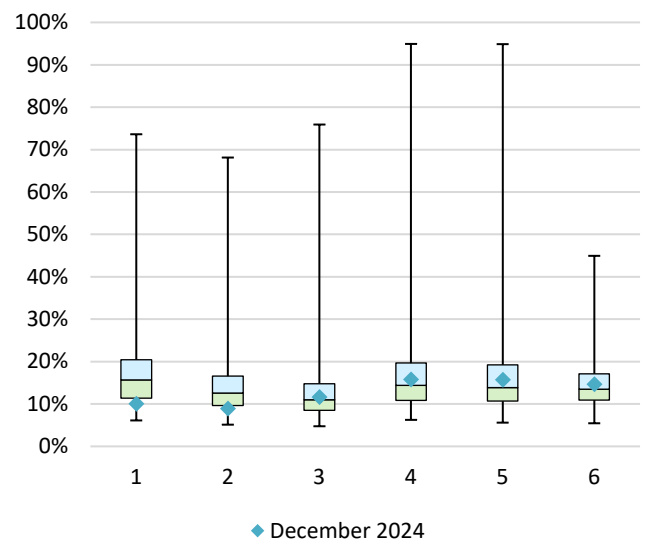


Figure 12: Monthly annualized volatility analysis, EUR gross return. Apr. 2012 – Dec. 2024. Source: STOXX.

## ESG and Sustainability indices

### Key points

Among the STOXX ESG and Sustainability indices, the [EURO STOXX 50® ESG](#) index underperformed its benchmark by 24 basis points.

The [STOXX® Global ESG Select KPIs index](#), meanwhile, topped the STOXX Global 1800 by 92 basis points. The STOXX ESG Select KPIs indices offer a broad market exposure that is tilted towards companies that score better with respect to a small set of environmental, social, and governance key performance indicators.

### Risk and return characteristics

|   | Return (%) |      |      |      |      |      | Annualized volatility (%) |      |      |      |      |      |
|---|------------|------|------|------|------|------|---------------------------|------|------|------|------|------|
|   | EUR        |      |      | USD  |      |      | EUR                       |      |      | USD  |      |      |
|   | 1M         | YTD  | 1Y   | 1M   | YTD  | 1Y   | 1M                        | YTD  | 1Y   | 1M   | YTD  | 1Y   |
| 1. EURO STOXX 50 ESG                        | 1.7        | 13.8 | 13.8 | -0.3 | 6.6  | 6.6  | 9.3                       | 13.2 | 13.2 | 13.4 | 15.5 | 15.5 |
| 2. STOXX Europe Industry Neutral ESG        | -0.5       | 8.6  | 8.6  | -2.4 | 1.8  | 1.8  | 8.6                       | 10.5 | 10.5 | 12.2 | 12.7 | 12.7 |
| 3. STOXX North America Industry Neutral ESG | -0.9       | 32.8 | 32.8 | -2.9 | 24.5 | 24.5 | 14.6                      | 13.8 | 13.8 | 14.2 | 12.6 | 12.6 |
| 4. STOXX Global ESG Select KPIs             | 0.1        | 23.2 | 23.2 | -1.8 | 15.4 | 15.4 | 10.1                      | 11.2 | 11.2 | 10.8 | 10.5 | 10.5 |
| 5. STOXX USA ESG Select KPIs                | -0.6       | 28.7 | 28.7 | -2.5 | 20.7 | 20.7 | 14.6                      | 13.5 | 13.5 | 14.2 | 12.0 | 12.0 |
| 6. STOXX Europe ESG Leaders Select 30       | -0.1       | 15.0 | 15.0 |      |      |      | 8.1                       | 10.5 | 10.5 |      |      |      |

Risk and return performance figures for STOXX ESG and Sustainability indices, gross return. Data as of December 31, 2024. Source: STOXX.

### Index and volatility performance

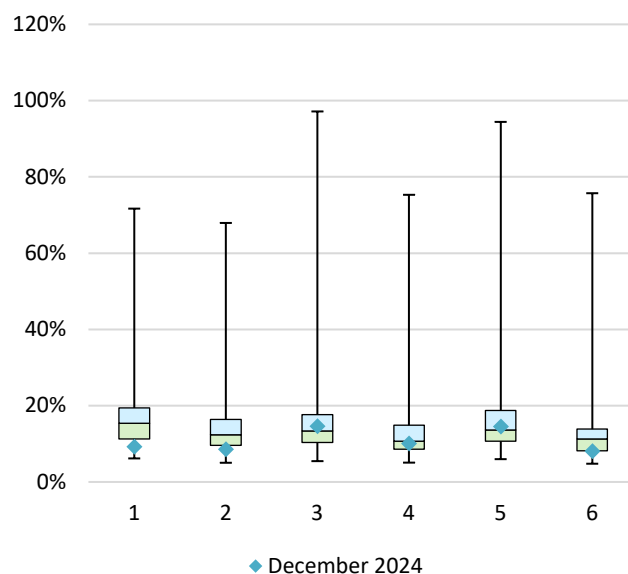
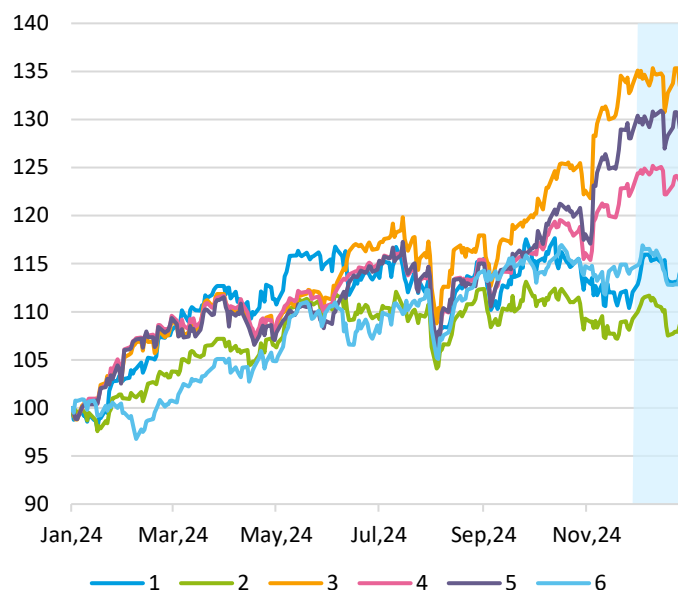


Figure 13: EUR gross return index performance. Jan. 2024 – Dec. 2024. Shaded area: Dec. 2024. Source: STOXX.

Figure 14: Monthly annualized volatility analysis, EUR gross return. Oct. 2012 – Dec. 2024. Source: STOXX.

## Climate Indices – Paris-Aligned Benchmark indices

### Key points

The [STOXX® Global 1800 PAB](#) outperformed its benchmark in December.

The [STOXX Paris-Aligned Benchmark indices \(PABs\)](#) are based on liquid securities from a selection of STOXX Benchmark indices and follow the [EU Paris-aligned Benchmark \(EU PAB\) requirements](#) outlined by the European Commission's Regulation (EU) 2020/1818, supplementing Regulation (EU) 2016/1011 of the European Parliament and of the Council on climate benchmarks.

Those requirements are designed such that the resulting PAB portfolio's greenhouse gas (GHG) emissions are aligned with the long-term global warming target of the Paris Climate Agreement. The indices incorporate stringent carbon limitations in the selection of holdings, in line with global commitments to work towards keeping global warming between 1.5°C and 2°C above pre-industrial levels.

STOXX has partnered with Sustainalytics for datasets relating to their Global Standards Screening and controversial weapons, and with ISS ESG for climate-related data such as Scope 1 to Scope 3 emissions, science-based climate targets, and others.

### Risk and return characteristics

|                          | Return (%) |      |      |      |      |      | Annualized volatility (%) |      |      |      |      |      |
|--------------------------|------------|------|------|------|------|------|---------------------------|------|------|------|------|------|
|                          | EUR        |      |      | USD  |      |      | EUR                       |      |      | USD  |      |      |
|                          | 1M         | YTD  | 1Y   | 1M   | YTD  | 1Y   | 1M                        | YTD  | 1Y   | 1M   | YTD  | 1Y   |
| 1. EURO STOXX PAB        | 1.7        | 8.6  | 8.6  | -0.3 | 1.8  | 1.8  | 8.5                       | 11.6 | 11.6 | 12.3 | 14.2 | 14.2 |
| 2. EURO STOXX TMI PAB    | 1.6        | 8.3  | 8.3  | -0.3 | 1.6  | 1.6  | 8.5                       | 11.6 | 11.6 | 12.3 | 14.1 | 14.1 |
| 3. STOXX Europe 600 PAB  | -0.1       | 7.6  | 7.6  | -2.0 | 0.8  | 0.8  | 9.1                       | 10.7 | 10.7 | 12.4 | 12.9 | 12.9 |
| 4. STOXX Global 1800 PAB | 0.2        | 21.7 | 21.7 | -1.7 | 14.0 | 14.0 | 11.9                      | 11.4 | 11.4 | 11.5 | 10.8 | 10.8 |
| 5. STOXX USA 500 PAB     | 0.6        | 30.2 | 30.2 | -1.4 | 22.1 | 22.1 | 15.9                      | 14.2 | 14.2 | 15.1 | 12.8 | 12.8 |
| 6. STOXX USA 900 PAB     | 0.2        | 29.2 | 29.2 | -1.8 | 21.1 | 21.1 | 15.7                      | 14.0 | 14.0 | 14.9 | 12.6 | 12.6 |

Risk and return performance figures for STOXX Paris-Aligned Benchmark indices, gross return. Data as of December 31, 2024. Source: STOXX.

### Index and volatility performance

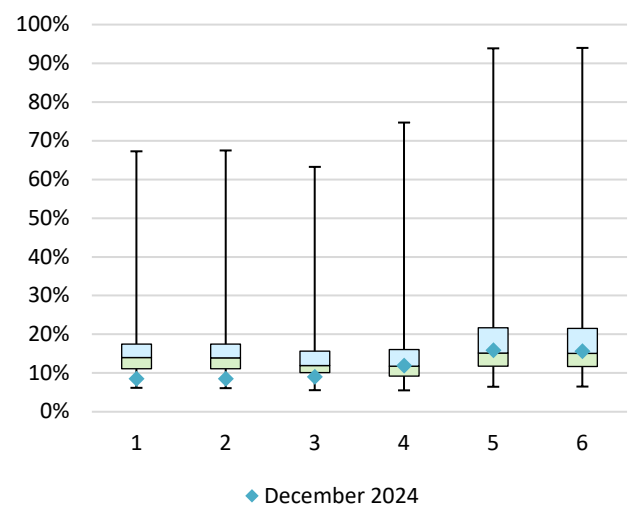
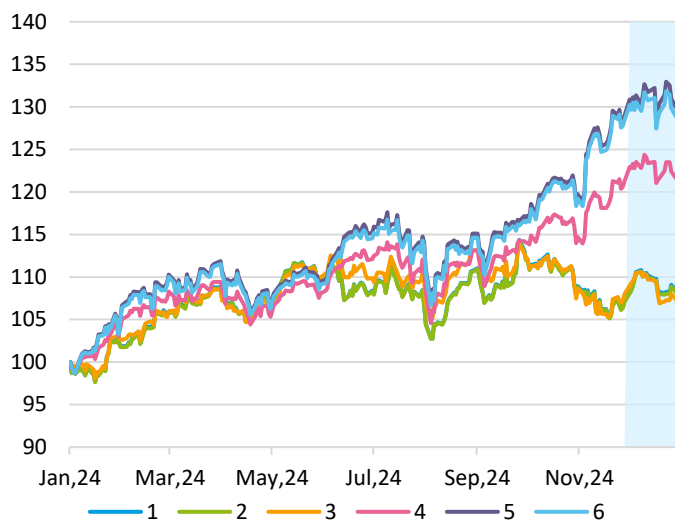


Figure 15: EUR gross return index performance. Jan. 2024 – Dec. 2024. Shaded area: Dec. 2024. Source: STOXX.

Figure 16: Monthly annualized volatility analysis, EUR gross return. Apr. 2018 – Dec. 2024. Source: STOXX.

## Climate indices – Climate Transition Benchmark indices

### Key points

The [STOXX® Global 1800 CTB](#) also outperformed its benchmark last month.

The [STOXX Climate Transition Benchmark indices \(CTBs\)](#) are based on liquid securities from a selection of STOXX Benchmark Indices and follow the [EU Climate Transition Benchmark \(EU CTB\) requirements](#) outlined by the European Commission's Regulation (EU) 2020/1818, supplementing Regulation (EU) 2016/1011 of the European Parliament and of the Council on climate benchmarks. Those requirements are designed such that the resulting CTB portfolio is on a decarbonization trajectory.

As with the Paris-Aligned Benchmarks, STOXX has partnered with Sustainalytics for exclusions datasets, and with ISS ESG for climate-related data, science-based climate targets and others.

### Risk and return characteristics

|                          | Return (%) |      |      |      |      |      | Annualized volatility (%) |      |      |      |      |      |
|--------------------------|------------|------|------|------|------|------|---------------------------|------|------|------|------|------|
|                          | EUR        |      |      | USD  |      |      | EUR                       |      |      | USD  |      |      |
|                          | 1M         | YTD  | 1Y   | 1M   | YTD  | 1Y   | 1M                        | YTD  | 1Y   | 1M   | YTD  | 1Y   |
| 1. EURO STOXX CTB        | 1.6        | 8.5  | 8.5  | -0.4 | 1.7  | 1.7  | 8.3                       | 11.4 | 11.4 | 12.2 | 14.0 | 14.0 |
| 2. EURO STOXX TMI CTB    | 1.5        | 8.3  | 8.3  | -0.5 | 1.5  | 1.5  | 8.3                       | 11.4 | 11.4 | 12.2 | 14.0 | 14.0 |
| 3. STOXX Europe 600 CTB  | -0.2       | 8.0  | 8.0  | -2.2 | 1.2  | 1.2  | 9.0                       | 10.7 | 10.7 | 12.4 | 12.8 | 12.8 |
| 4. STOXX Global 1800 CTB | 0.0        | 20.9 | 20.9 | -2.0 | 13.4 | 13.4 | 11.6                      | 11.2 | 11.2 | 11.2 | 10.6 | 10.6 |
| 5. STOXX USA 500 CTB     | 0.0        | 28.1 | 28.1 | -2.0 | 20.1 | 20.1 | 15.4                      | 13.8 | 13.8 | 14.5 | 12.4 | 12.4 |
| 6. STOXX USA 900 CTB     | -0.2       | 27.5 | 27.5 | -2.2 | 19.5 | 19.5 | 15.3                      | 13.7 | 13.7 | 14.4 | 12.4 | 12.4 |

Risk and return performance figures for STOXX Climate Transition Benchmark indices, gross return. Data as of December 31, 2024. Source: STOXX.

### Index and volatility performance

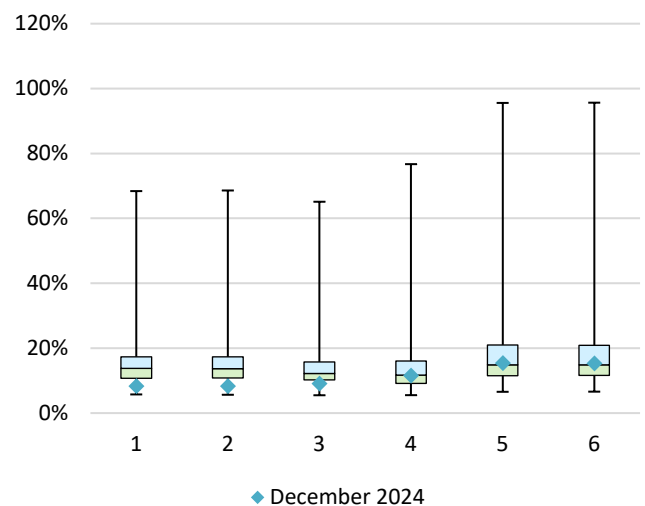
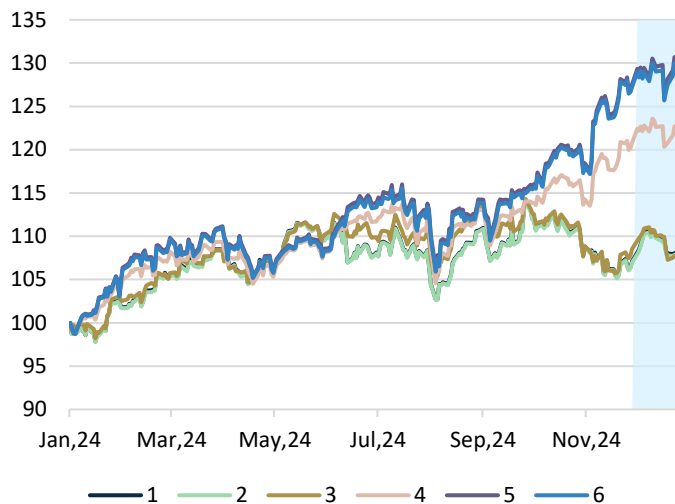


Figure 17: EUR gross return index performance. Jan. 2024 – Dec. 2024. Shaded area: Dec. 2024. Source: STOXX.

Figure 18: Monthly annualized volatility analysis, EUR gross return. Apr. 2018 – Dec. 2024. Source: STOXX.

## Biodiversity indices

### Key points

The [ISS STOXX® Biodiversity indices](#) allow investors to take a comprehensive approach to the challenges, risks and opportunities from the degradation of our natural ecosystems and growing efforts to protect them.

The indices exclude companies involved in activities that are controversial or cause harm to biodiversity, select securities with less negative impact on ecosystems and those contributing positively to relevant UN Sustainable Development Goals (SDGs). They also reduce the portfolio's carbon emissions.

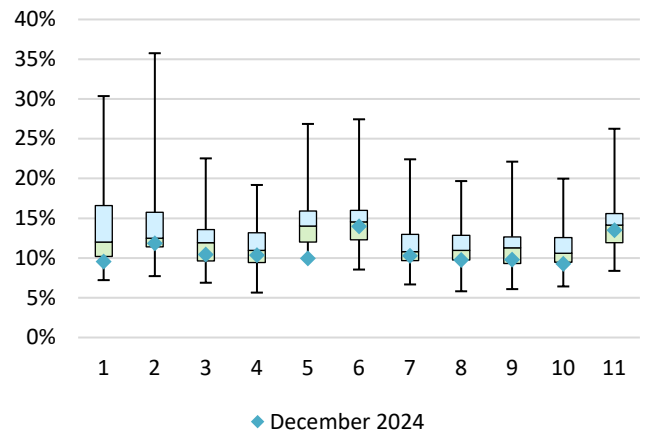
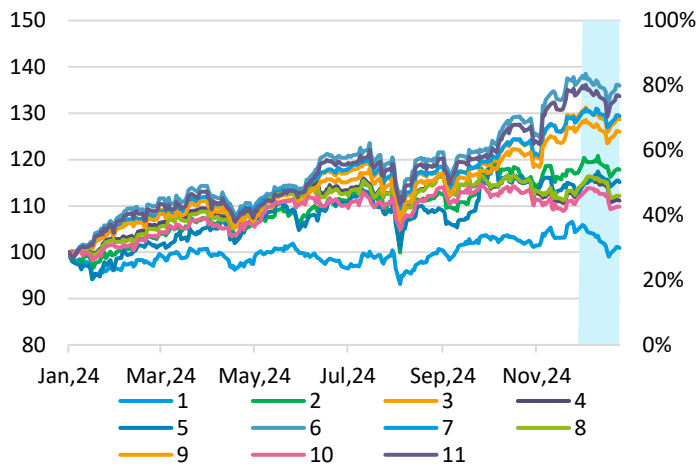
A key component of the ISS STOXX Biodiversity framework is the Potentially Disappeared Fraction of Species (PDF), an output of ISS ESG's [Biodiversity Impact Assessment Tool](#). PDF seeks to measure how corporates affect our natural world by considering a set of environmental pressures on species and habitats across the entire value chain and different geographical locations.

### Risk and return characteristics

|   | Return (%) |      |      |      |      |      | Annualized volatility (%) |      |      |      |      |      |
|---|------------|------|------|------|------|------|---------------------------|------|------|------|------|------|
|   | EUR        |      |      | USD  |      |      | EUR                       |      |      | USD  |      |      |
|   | 1M         | YTD  | 1Y   | 1M   | YTD  | 1Y   | 1M                        | YTD  | 1Y   | 1M   | YTD  | 1Y   |
| 1. ISS STOXX World AC Biodiversity Leaders          | -4.5       | -0.3 | -0.3 | -6.4 | -6.5 | -6.5 | 9.5                       | 11.2 | 11.2 | 11.3 | 11.7 | 11.7 |
| 2. ISS STOXX Asia/Pacific AC Biodiversity           | 1.0        | 18.6 | 18.6 | -1.0 | 11.2 | 11.2 | 11.8                      | 16.3 | 16.3 | 12.3 | 16.1 | 16.1 |
| 3. ISS STOXX Developed World Biodiversity           | -1.8       | 27.1 | 27.1 | -3.7 | 19.2 | 19.2 | 10.4                      | 12.4 | 12.4 | 10.8 | 11.7 | 11.7 |
| 4. ISS STOXX Developed Europe Biodiversity          | -1.2       | 11.8 | 11.8 | -3.2 | 4.8  | 4.8  | 10.4                      | 11.1 | 11.1 | 13.4 | 13.0 | 13.0 |
| 5. ISS STOXX Emerging Markets Biodiversity          | 1.8        | 15.0 | 15.0 | -0.1 | 7.8  | 7.8  | 10.0                      | 14.8 | 14.8 | 9.4  | 14.4 | 14.4 |
| 6. ISS STOXX US Biodiversity                        | -2.5       | 33.6 | 33.6 | -4.4 | 25.2 | 25.2 | 14.0                      | 14.6 | 14.6 | 13.6 | 13.4 | 13.4 |
| 7. ISS STOXX World AC Biodiversity                  | -0.6       | 28.0 | 28.0 | -2.6 | 20.0 | 20.0 | 10.3                      | 12.1 | 12.1 | 10.4 | 11.3 | 11.3 |
| 8. ISS STOXX Europe 600 Biodiversity                | -0.8       | 12.8 | 12.8 | -2.8 | 5.7  | 5.7  | 9.7                       | 11.0 | 11.0 | 13.0 | 13.0 | 13.0 |
| 9. ISS STOXX Developed World Biodiversity Focus SRI | -1.9       | 24.6 | 24.6 | -3.9 | 16.8 | 16.8 | 9.8                       | 11.7 | 11.7 | 10.1 | 11.1 | 11.1 |
| 10. ISS STOXX Europe 600 Biodiversity Focus SRI     | -1.2       | 10.2 | 10.2 | -3.1 | 3.3  | 3.3  | 9.3                       | 10.8 | 10.8 | 12.6 | 13.0 | 13.0 |
| 11. ISS STOXX US Biodiversity Focus SRI             | -2.4       | 31.6 | 31.6 | -4.4 | 23.3 | 23.3 | 13.5                      | 14.0 | 14.0 | 13.1 | 12.8 | 12.8 |

Risk and return performance figures for ISS STOXX Biodiversity indices, gross return. Data as of December 31, 2024. Source: STOXX.

### Index and volatility performance



## Thematic indices

### Key points

The [STOXX Thematic indices](#) seek exposure to the long-term economic upside of disruptive global megatrends.

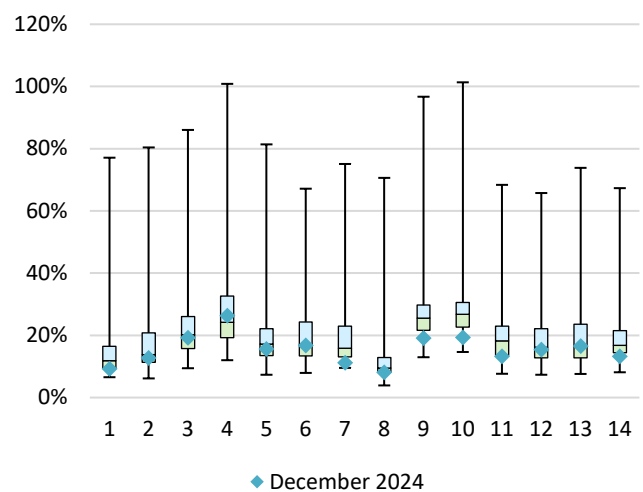
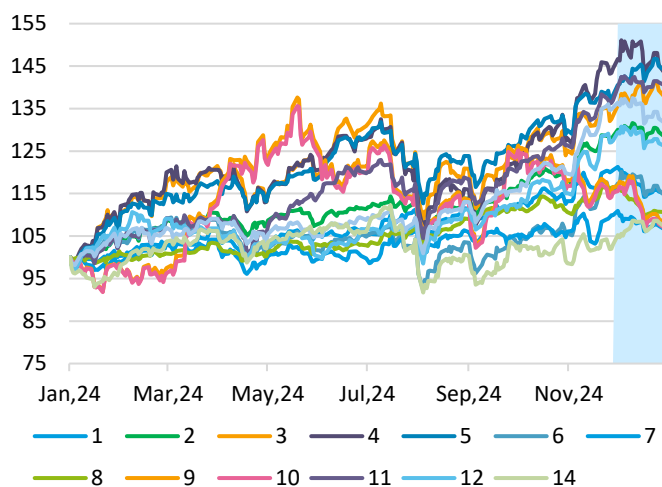
Only 17 of the 40 thematic indices featured in this newsletter outperformed the STOXX Global 1800 last month. The [STOXX® Europe Luxury 10](#) index showed the biggest gain, while the [STOXX® Global Lithium Miners and Producers](#) index led losses.

### Risk and return characteristics

|   | Return (%) |      |      |      |      |      | Annualized volatility (%) |      |      |      |      |      |
|---|------------|------|------|------|------|------|---------------------------|------|------|------|------|------|
|   | EUR        |      |      | USD  |      |      | EUR                       |      |      | USD  |      |      |
|   | 1M         | YTD  | 1Y   | 1M   | YTD  | 1Y   | 1M                        | YTD  | 1Y   | 1M   | YTD  | 1Y   |
| 1. STOXX Global Ageing Population                       | -4.1       | 16.4 | 16.4 | -6.0 | 9.1  | 9.1  | 9.2                       | 11.6 | 11.6 | 9.5  | 11.4 | 11.4 |
| 2. STOXX Global AI Adopters and Applications            | 0.2        | 29.0 | 29.0 | -1.8 | 20.9 | 20.9 | 12.8                      | 13.0 | 13.0 | 12.7 | 12.1 | 12.1 |
| 3. STOXX Global AI Infrastructure                       | 3.0        | 35.3 | 35.3 | 0.9  | 26.9 | 26.9 | 19.2                      | 22.0 | 22.0 | 20.1 | 21.3 | 21.3 |
| 4. STOXX Global Artificial Intelligence                 | -1.2       | 41.2 | 41.2 | -3.1 | 32.4 | 32.4 | 26.3                      | 23.5 | 23.5 | 26.5 | 22.9 | 22.9 |
| 5. STOXX Global Artificial Intelligence Innovators      | 3.8        | 42.5 | 42.5 | 1.8  | 33.6 | 33.6 | 15.7                      | 17.3 | 17.3 | 15.5 | 16.2 | 16.2 |
| 6. STOXX Global Automation & Robotics                   | -1.0       | 13.0 | 13.0 | -3.0 | 5.9  | 5.9  | 16.8                      | 17.8 | 17.8 | 17.4 | 17.5 | 17.5 |
| 7. STOXX Global Breakthrough Healthcare                 | -2.6       | 8.6  | 8.6  | -4.5 | 1.8  | 1.8  | 11.3                      | 13.5 | 13.5 | 11.0 | 13.3 | 13.3 |
| 8. STOXX Global Broad Infrastructure                    | -4.6       | 12.3 | 12.3 | -6.5 | 5.3  | 5.3  | 8.1                       | 8.8  | 8.8  | 9.4  | 9.1  | 9.1  |
| 9. STOXX Global Copper and Metals Mining                | -6.8       | 8.7  | 8.7  | -8.7 | 1.9  | 1.9  | 19.1                      | 25.4 | 25.4 | 21.3 | 26.6 | 26.6 |
| 10. STOXX Global Copper Miners                          | -6.8       | 7.5  | 7.5  | -8.7 | 0.7  | 0.7  | 19.3                      | 25.5 | 25.5 | 21.6 | 26.8 | 26.8 |
| 11. STOXX Global Digital Entertainment and Education    | 2.0        | 38.1 | 38.1 | 0.0  | 29.5 | 29.5 | 13.3                      | 16.5 | 16.5 | 13.4 | 16.0 | 16.0 |
| 12. STOXX Global Digital Security                       | -0.9       | 24.8 | 24.8 | -2.9 | 17.0 | 17.0 | 15.5                      | 16.4 | 16.4 | 15.2 | 15.6 | 15.6 |
| 13. STOXX Global Digitalisation                         | -2.7       | 30.8 | 30.8 | -4.6 | 22.6 | 22.6 | 16.6                      | 14.5 | 14.5 | 16.7 | 13.9 | 13.9 |
| 14. STOXX Global Electric Vehicles & Driving Technology | 3.7        | 6.2  | 6.2  | 1.6  | -0.4 | -0.4 | 13.3                      | 17.9 | 17.9 | 13.7 | 17.9 | 17.9 |

Risk and return performance figures for STOXX Thematic indices, gross return. Data as of December 31, 2024. Source: STOXX.

### Index and volatility performance



## Thematic indices (cont.)

### Risk and return characteristics

|  | Return (%) |       |       |       |       |       | Annualized volatility (%) |      |      |      |      |      |
|--|------------|-------|-------|-------|-------|-------|---------------------------|------|------|------|------|------|
|  | EUR        |       |       | USD   |       |       | EUR                       |      |      | USD  |      |      |
|  | 1M         | YTD   | 1Y    | 1M    | YTD   | 1Y    | 1M                        | YTD  | 1Y   | 1M   | YTD  | 1Y   |
| 15. STOXX Global Energy Storage and Materials  | -3.9       | -8.6  | -8.6  | -5.8  | -14.3 | -14.3 | 11.7                      | 16.0 | 16.0 | 11.9 | 16.7 | 16.7 |
| 16. STOXX Global Fintech                       | -2.4       | 27.2  | 27.2  | -4.3  | 19.2  | 19.2  | 15.6                      | 14.3 | 14.3 | 15.4 | 13.6 | 13.6 |
| 17. STOXX Global Health & Weight Loss          | -0.3       | 9.2   | 9.2   | -2.3  | 2.3   | 2.3   | 11.6                      | 13.8 | 13.8 | 10.4 | 13.6 | 13.6 |
| 18. STOXX Global Housing Construction          | -7.0       | 4.1   | 4.1   | -8.8  | -2.4  | -2.4  | 14.6                      | 18.5 | 18.5 | 15.8 | 18.5 | 18.5 |
| 19. STOXX Global Industry 4.0                  | 1.6        | 23.9  | 23.9  | -0.3  | 16.2  | 16.2  | 18.4                      | 19.1 | 19.1 | 19.3 | 18.5 | 18.5 |
| 20. STOXX Global Intelligent Computing         | 5.2        | 13.3  | 13.3  | 3.2   | 6.2   | 6.2   | 14.0                      | 17.6 | 17.6 | 15.6 | 17.3 | 17.3 |
| 21. STOXX Global Lithium and Battery Producers | -4.4       | -15.7 | -15.7 | -6.2  | -21.0 | -21.0 | 19.5                      | 22.5 | 22.5 | 17.8 | 22.8 | 22.8 |
| 22. STOXX Global Lithium Miners and Producers  | -13.5      | -41.9 | -41.9 | -15.2 | -45.6 | -45.6 | 21.9                      | 32.0 | 32.0 | 19.8 | 32.1 | 32.1 |
| 23. STOXX Global Metaverse                     | -1.8       | 31.9  | 31.9  | -3.7  | 23.6  | 23.6  | 20.7                      | 19.6 | 19.6 | 20.6 | 18.9 | 18.9 |
| 24. STOXX Global Millennials                   | 2.3        | 40.6  | 40.6  | 0.3   | 31.8  | 31.8  | 15.9                      | 14.9 | 14.9 | 15.1 | 14.1 | 14.1 |
| 25. STOXX Global Next Generation Telecoms      | 2.0        | 21.1  | 21.1  | 0.0   | 13.5  | 13.5  | 16.9                      | 15.0 | 15.0 | 18.2 | 14.4 | 14.4 |
| 26. STOXX Global Pet Care                      | -0.5       | 6.6   | 6.6   | -2.5  | -0.1  | -0.1  | 12.8                      | 11.2 | 11.2 | 11.3 | 10.8 | 10.8 |
| 27. STOXX Global Sharing Economy               | -1.5       | 41.3  | 41.3  | -3.4  | 32.4  | 32.4  | 17.9                      | 15.9 | 15.9 | 17.3 | 14.9 | 14.9 |

Risk and return performance figures for STOXX Thematic indices, gross return. Data as of December 31, 2024. Source: STOXX.

### Index and volatility performance

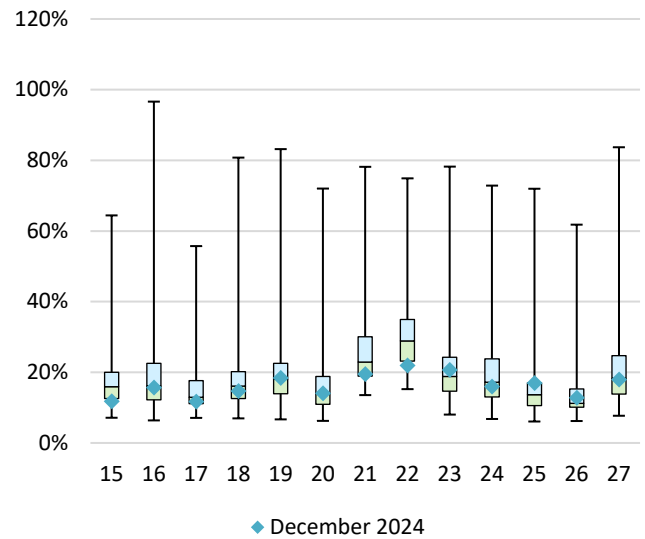
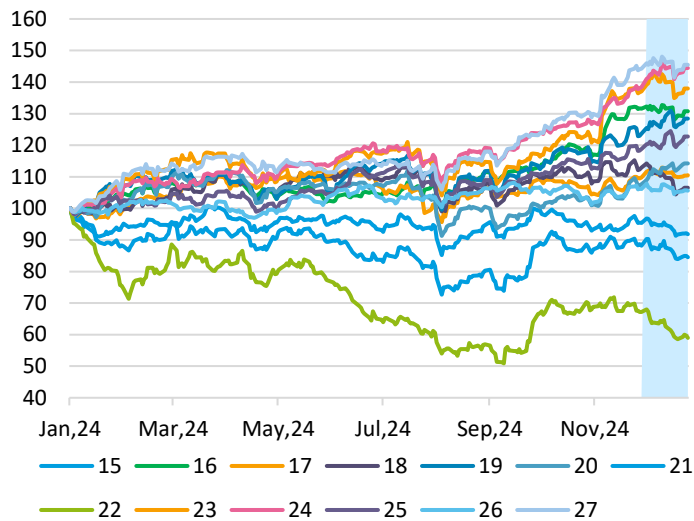


Figure 23: EUR gross return index performance, Jan. 2024 – Dec. 2024. Shaded area: Dec. 2024. Source: STOXX.

Figure 24: Monthly annualized volatility analysis, EUR gross return. Nov. 2017 – Dec. 2024. Source: STOXX.



## Thematic indices (cont.)

### Risk and return characteristics

|  | Return (%) |      |      |      |      |      | Annualized volatility (%) |      |      |      |      |      |
|--|------------|------|------|------|------|------|---------------------------|------|------|------|------|------|
|  | EUR        |      |      | USD  |      |      | EUR                       |      |      | USD  |      |      |
|  | 1M         | YTD  | 1Y   | 1M   | YTD  | 1Y   | 1M                        | YTD  | 1Y   | 1M   | YTD  | 1Y   |
| 28. STOXX Global Silver Economy                | -3.3       | 13.9 | 13.9 | -5.2 | 6.8  | 6.8  | 13.0                      | 14.2 | 14.2 | 13.2 | 13.3 | 13.3 |
| 29. STOXX Global Silver Mining                 | -7.7       | 24.4 | 24.4 | -9.5 | 16.7 | 16.7 | 31.8                      | 34.6 | 34.6 | 34.3 | 35.8 | 35.8 |
| 30. STOXX Global Smart Cities                  | 3.4        | 18.9 | 18.9 | 1.4  | 11.4 | 11.4 | 25.9                      | 24.4 | 24.4 | 26.0 | 23.9 | 23.9 |
| 31. STOXX Global Smart City Infrastructure     | -1.9       | 17.8 | 17.8 | -3.9 | 10.5 | 10.5 | 10.1                      | 13.1 | 13.1 | 11.2 | 13.3 | 13.3 |
| 32. STOXX Global Smart Factory                 | 1.3        | 5.4  | 5.4  | -0.7 | -1.2 | -1.2 | 19.6                      | 23.7 | 23.7 | 20.9 | 23.3 | 23.3 |
| 33. STOXX Global Video Gaming & eSports        | -0.9       | 28.7 | 28.7 | -2.8 | 20.7 | 20.7 | 13.8                      | 17.5 | 17.5 | 13.9 | 16.8 | 16.8 |
| 34. STOXX World AC AI Market Leaders           | 3.1        | 38.2 | 38.2 | 1.1  | 29.6 | 29.6 | 15.6                      | 19.5 | 19.5 | 15.8 | 18.7 | 18.7 |
| 35. STOXX World AC NexGen Connectivity         | 2.9        | 28.1 | 28.1 | 0.9  | 20.1 | 20.1 | 17.6                      | 16.1 | 16.1 | 18.5 | 15.4 | 15.4 |
| 36. STOXX World AC NexGen Media                | 1.0        | 42.9 | 42.9 | -1.0 | 33.9 | 33.9 | 16.9                      | 19.0 | 19.0 | 16.4 | 18.3 | 18.3 |
| 37. STOXX World AC NexGen Software Development | -2.1       | 25.2 | 25.2 | -4.0 | 17.4 | 17.4 | 21.5                      | 23.1 | 23.1 | 21.5 | 22.4 | 22.4 |
| 38. STOXX Europe Luxury 10                     | 7.8        | 9.1  | 9.1  | 5.7  | 2.2  | 2.2  | 16.8                      | 20.9 | 20.9 | 18.4 | 22.6 | 22.6 |
| 39. STOXX USA ETF Industry                     |            |      |      | -4.5 | 17.7 | 17.7 |                           |      |      | 12.9 | 12.4 | 12.4 |
| 40. iSTOXX Developed Markets B.R.AI.N.         | -4.5       | 1.5  | 1.5  | -6.4 | -4.9 | -4.9 | 15.4                      | 15.2 | 15.2 | 16.4 | 14.7 | 14.7 |

Risk and return performance figures for STOXX Thematic indices, gross return. Data as of December 31, 2024. Source: STOXX.

### Index and volatility performance

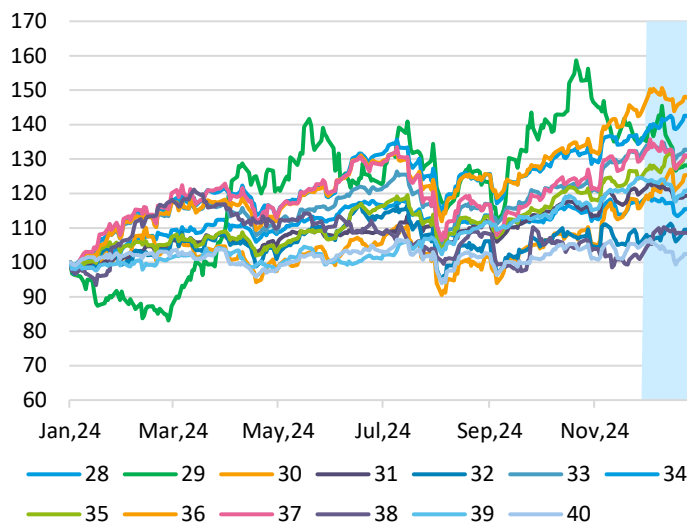


Figure 25: 25-33, 35 show EUR gross return index performance, 34 shows USD performance; Jan. 2024 – Dec. 2024. Shaded area: Dec. 2024. Source: STOXX.

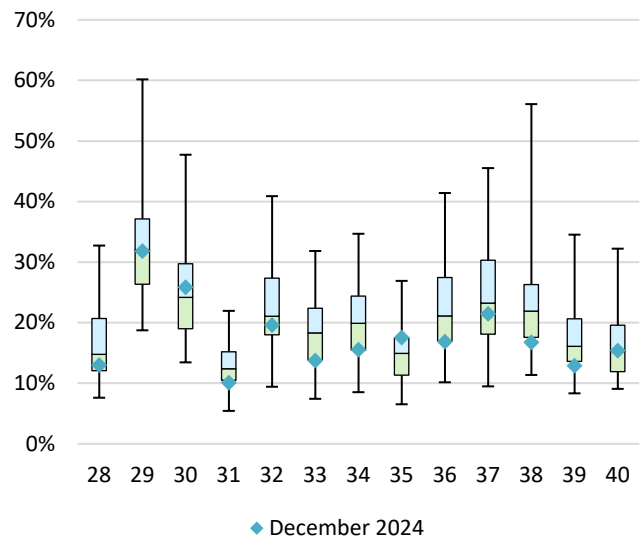


Figure 26: Monthly annualized volatility analysis, EUR gross return. Aug. 2020 – Dec. 2024. Source: STOXX.

## Digital Asset indices

### Key points

Both the [STOXX® Digital Asset Blue Chip](#) index and the [STOXX® Digital Asset Blue Chip X](#), which excludes assets not traded on Xetra®, fell 5.1% in December.

STOXX also offers digital asset single-token indices, which respectively track Bitcoin, Ethereum, Solana, Cardano and Ripple. The [STOXX® Bitcoin](#) index climbed 125.3% in the year.

### Risk and return characteristics

|                                    | Return (%) |       |       |       |       |       | Annualized volatility (%) |       |       |       |       |       |
|------------------------------------|------------|-------|-------|-------|-------|-------|---------------------------|-------|-------|-------|-------|-------|
|                                    | EUR        |       |       | USD   |       |       | EUR                       |       |       | USD   |       |       |
|                                    | 1M         | YTD   | 1Y    | 1M    | YTD   | 1Y    | 1M                        | YTD   | 1Y    | 1M    | YTD   | 1Y    |
| 1. STOXX Digital Asset Blue Chip   | -3.2       | 48.8  | 48.8  | -5.1  | 54.1  | 54.1  | 61.4                      | 54.9  | 54.9  | 62.4  | 54.3  | 54.3  |
| 2. STOXX Digital Asset Blue Chip X | -3.2       | 48.3  | 48.3  | -5.1  | 53.5  | 53.5  | 61.4                      | 54.9  | 54.9  | 62.4  | 54.3  | 54.3  |
| 3. STOXX Bitcoin                   | -1.0       | 140.4 | 140.4 | -2.9  | 125.3 | 125.3 | 51.5                      | 51.8  | 51.8  | 52.8  | 51.4  | 51.4  |
| 4. STOXX Ethereum                  | -4.0       | 56.3  | 56.3  | -5.8  | 46.5  | 46.5  | 66.7                      | 63.1  | 63.1  | 67.3  | 63.2  | 63.2  |
| 5. STOXX Solana                    | -17.1      | 99.6  | 99.6  | -18.7 | 87.1  | 87.1  | 82.9                      | 83.7  | 83.7  | 83.7  | 83.5  | 83.5  |
| 6. STOXX Cardano                   | -17.7      | 53.5  | 53.5  | -19.3 | 43.9  | 43.9  | 110.5                     | 93.1  | 93.1  | 110.1 | 92.5  | 92.5  |
| 7. STOXX Ripple                    | 26.7       | 263.2 | 263.2 | 24.2  | 240.5 | 240.5 | 234.8                     | 107.5 | 107.5 | 231.0 | 106.4 | 106.4 |

Risk and return performance figures for STOXX Digital assets indices, price return. Data as of December 31, 2024. Source: STOXX.

### Index and volatility performance

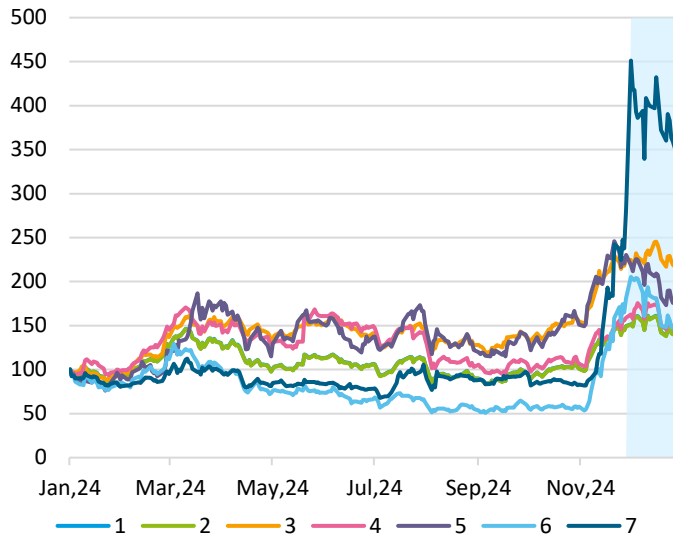


Figure 27: EUR price return index performance. Jan. 2024 – Dec. 2024. Shaded area: Dec. 2024. Source: STOXX.

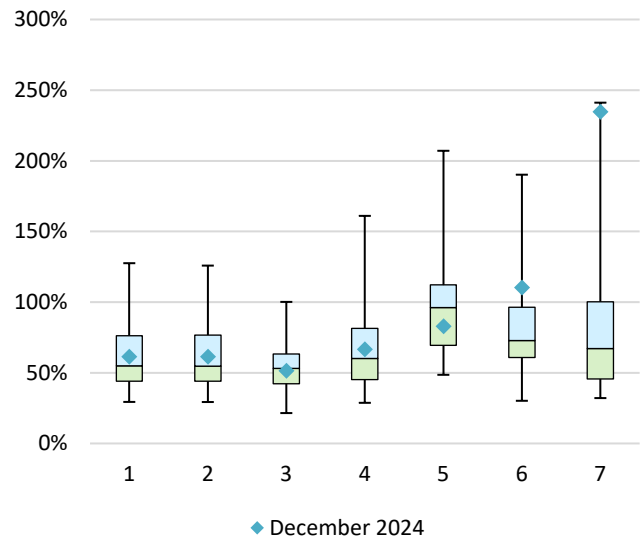


Figure 28: Monthly annualized volatility analysis, EUR gross return. Apr. 2021 – Dec. 2024. Source: STOXX.

## Factor indices

### Key points

The [STOXX Factor indices](#) offer robust factor definitions and targeted factor exposures, and ensure the tradability of component stocks. They employ the institutionally tested analytics of Axioma Factor Risk Models.

On a global basis, Momentum led losses last month although the strategy performed the best in the suite over the entire year, returning 46.7%.

### Risk and return characteristics

|   | Return (%) |      |      |      |      |      | Annualized volatility (%) |      |      |      |      |      |
|---|------------|------|------|------|------|------|---------------------------|------|------|------|------|------|
|   | EUR        |      |      | USD  |      |      | EUR                       |      |      | USD  |      |      |
|   | 1M         | YTD  | 1Y   | 1M   | YTD  | 1Y   | 1M                        | YTD  | 1Y   | 1M   | YTD  | 1Y   |
| 1. STOXX Global 1800 Ax Low Risk            | -1.8       | 23.4 | 23.4 | -3.8 | 15.7 | 15.7 | 8.2                       | 8.6  | 8.6  | 7.6  | 7.5  | 7.5  |
| 2. STOXX Global 1800 Ax Momentum            | -3.1       | 56.5 | 56.5 | -5.0 | 46.7 | 46.7 | 15.7                      | 17.2 | 17.2 | 15.9 | 16.5 | 16.5 |
| 3. STOXX Global 1800 Ax Multi-Factor        | -2.1       | 29.2 | 29.2 | -4.1 | 21.1 | 21.1 | 9.6                       | 11.9 | 11.9 | 9.7  | 11.4 | 11.4 |
| 4. STOXX Global 1800 Ax Quality             | -2.3       | 26.5 | 26.5 | -4.2 | 18.6 | 18.6 | 11.8                      | 12.9 | 12.9 | 11.9 | 12.2 | 12.2 |
| 5. STOXX Global 1800 Ax Size                | -3.0       | 23.3 | 23.3 | -4.9 | 15.5 | 15.5 | 10.7                      | 11.7 | 11.7 | 11.7 | 11.5 | 11.5 |
| 6. STOXX Global 1800 Ax Value               | -1.6       | 17.1 | 17.1 | -3.6 | 9.8  | 9.8  | 10.2                      | 12.6 | 12.6 | 10.5 | 12.0 | 12.0 |
| 7. STOXX Global 1800 ex USA Ax Low Risk     | -1.4       | 14.4 | 14.4 | -3.3 | 7.2  | 7.2  | 6.1                       | 7.6  | 7.6  | 8.8  | 9.1  | 9.1  |
| 8. STOXX Global 1800 ex USA Ax Momentum     | 0.7        | 28.9 | 28.9 | -1.3 | 20.8 | 20.8 | 11.1                      | 13.9 | 13.9 | 13.9 | 14.7 | 14.7 |
| 9. STOXX Global 1800 ex USA Ax Multi-Factor | 0.6        | 12.8 | 12.8 | -1.3 | 5.8  | 5.8  | 8.3                       | 10.8 | 10.8 | 10.8 | 12.1 | 12.1 |
| 10. STOXX Global 1800 ex USA Ax Quality     | -1.3       | 7.2  | 7.2  | -3.2 | 0.5  | 0.5  | 11.3                      | 12.0 | 12.0 | 13.9 | 13.1 | 13.1 |
| 11. STOXX Global 1800 ex USA Ax Size        | -0.9       | 7.3  | 7.3  | -2.8 | 0.6  | 0.6  | 8.5                       | 12.1 | 12.1 | 11.0 | 13.4 | 13.4 |
| 12. STOXX Global 1800 ex USA Ax Value       | 1.9        | 14.8 | 14.8 | -0.1 | 7.6  | 7.6  | 10.0                      | 12.5 | 12.5 | 12.8 | 14.0 | 14.0 |

Risk and return performance figures for STOXX Factor (Global) indices, gross return. Data as of December 31, 2024. Source: STOXX.

### Index and volatility performance

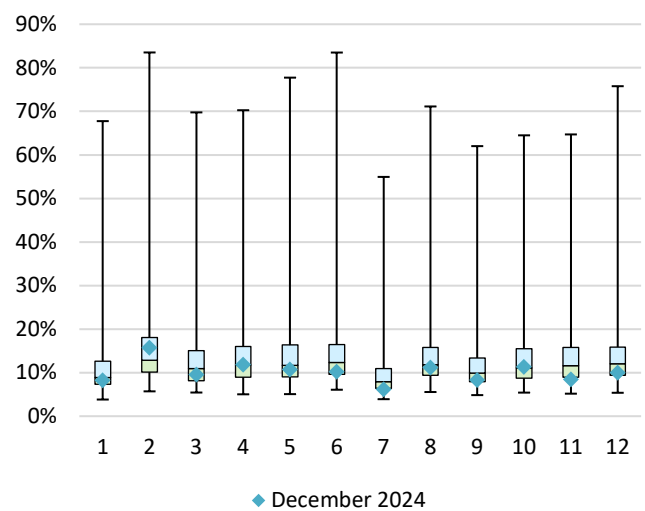
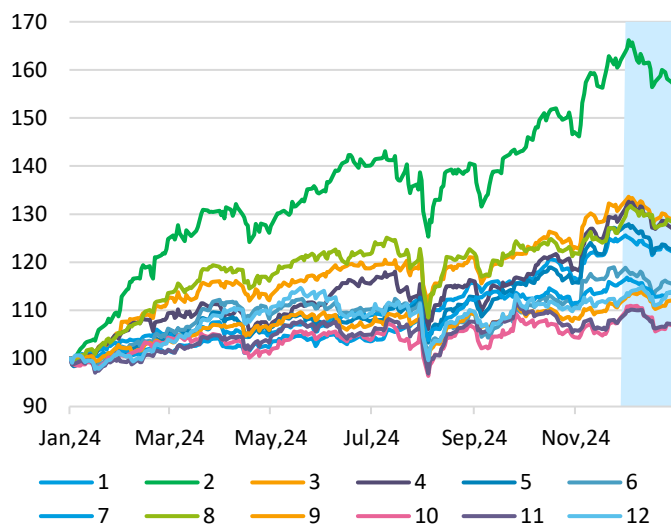


Figure 29: EUR gross return index performance. Jan. 2024 – Dec. 2024. Shaded area: Dec. 2024. Source: STOXX.

Figure 30: Monthly annualized volatility analysis, EUR gross return. Jan. 2004 – Dec. 2024. Source: STOXX.

## Industry Neutral Factor indices

### Key points

The STOXX Industry Neutral Single and Multi-Factor indices aim to harvest the risk premia of several academically validated style factors — Value, Momentum, Quality, Size and Low Risk — within each ICB industry.

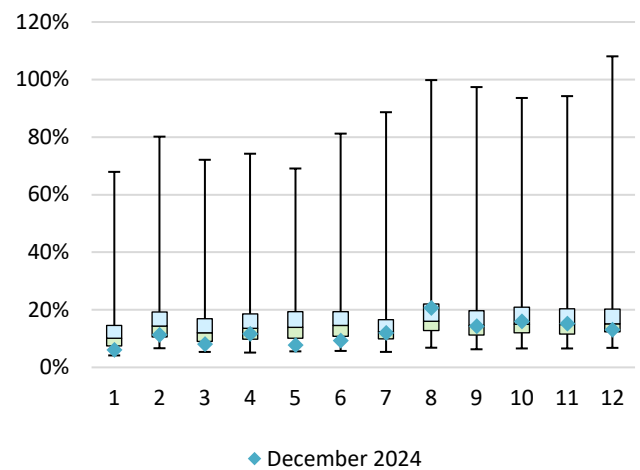
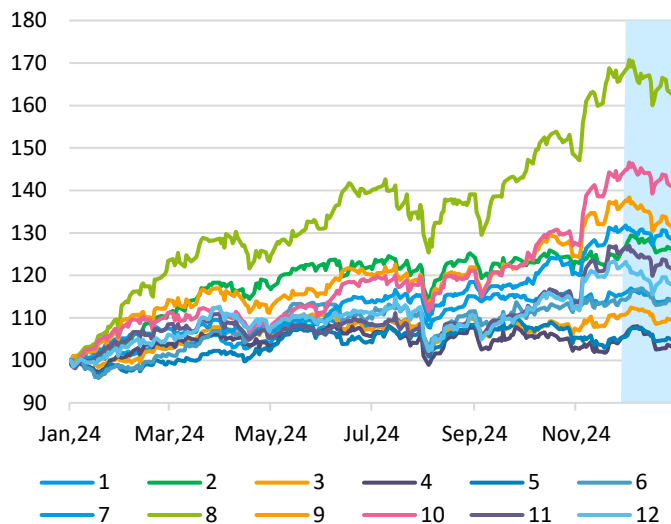
The indices rely on Axioma's proven factor models and keep the same industry allocation as the respective benchmarks, helping remove unintended industry exposures and enabling access to the pure return of the factor.

### Risk and return characteristics

|  | Return (%) |      |      |      |      |      | Annualized volatility (%) |      |      |      |      |      |
|--|------------|------|------|------|------|------|---------------------------|------|------|------|------|------|
|  | EUR        |      |      | USD  |      |      | EUR                       |      |      | USD  |      |      |
|  | 1M         | YTD  | 1Y   | 1M   | YTD  | 1Y   | 1M                        | YTD  | 1Y   | 1M   | YTD  | 1Y   |
| 1. STOXX Europe 600 Industry Neutral Ax Low Risk     | -0.6       | 14.7 | 14.7 | -2.6 | 7.5  | 7.5  | 6.1                       | 8.0  | 8.0  | 9.6  | 10.1 | 10.1 |
| 2. STOXX Europe 600 Industry Neutral Ax Momentum     | 0.9        | 26.8 | 26.8 | -1.1 | 18.8 | 18.8 | 11.3                      | 12.7 | 12.7 | 14.2 | 14.2 | 14.2 |
| 3. STOXX Europe 600 Industry Neutral Ax Multi-Factor | -0.6       | 10.6 | 10.6 | -2.6 | 3.7  | 3.7  | 8.2                       | 10.3 | 10.3 | 12.1 | 12.4 | 12.4 |
| 4. STOXX Europe 600 Industry Neutral Ax Quality      | -1.4       | 3.4  | 3.4  | -3.4 | -3.1 | -3.1 | 11.6                      | 11.7 | 11.7 | 14.7 | 13.5 | 13.5 |
| 5. STOXX Europe 600 Industry Neutral Ax Size         | 0.1        | 5.2  | 5.2  | -1.9 | -1.3 | -1.3 | 7.8                       | 10.8 | 10.8 | 11.8 | 13.3 | 13.3 |
| 6. STOXX Europe 600 Industry Neutral Ax Value        | 0.3        | 15.0 | 15.0 | -1.7 | 7.8  | 7.8  | 9.4                       | 11.9 | 11.9 | 13.4 | 14.1 | 14.1 |
| 7. STOXX USA 500 Industry Neutral Ax Low Risk        | -1.7       | 29.3 | 29.3 | -3.7 | 21.2 | 21.2 | 12.0                      | 11.3 | 11.3 | 10.9 | 9.6  | 9.6  |
| 8. STOXX USA 500 Industry Neutral Ax Momentum        | -3.0       | 61.4 | 61.4 | -4.9 | 51.3 | 51.3 | 20.7                      | 19.2 | 19.2 | 20.9 | 18.2 | 18.2 |
| 9. STOXX USA 500 Industry Neutral Ax Multi-Factor    | -3.7       | 31.8 | 31.8 | -5.6 | 23.5 | 23.5 | 14.3                      | 15.4 | 15.4 | 14.3 | 14.3 | 14.3 |
| 10. STOXX USA 500 Industry Neutral Ax Quality        | -2.2       | 40.4 | 40.4 | -4.1 | 31.6 | 31.6 | 16.1                      | 15.1 | 15.1 | 15.6 | 13.8 | 13.8 |
| 11. STOXX USA 500 Industry Neutral Ax Size           | -3.4       | 21.6 | 21.6 | -5.3 | 14.0 | 14.0 | 15.3                      | 14.4 | 14.4 | 15.2 | 13.2 | 13.2 |
| 12. STOXX USA 500 Industry Neutral Ax Value          | -3.4       | 19.3 | 19.3 | -5.3 | 11.8 | 11.8 | 13.2                      | 15.0 | 15.0 | 12.4 | 13.7 | 13.7 |

Risk and return performance figures for STOXX Industry Neutral Factor indices, gross return. Data as of December 31, 2024. Source: STOXX.

### Index and volatility performance



# Minimum Variance indices

## Key points

Minimum variance strategies in the US had a weak month relative to benchmarks in December,

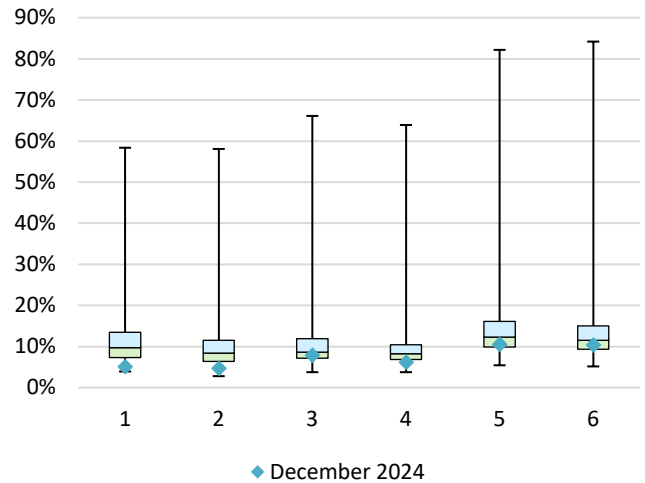
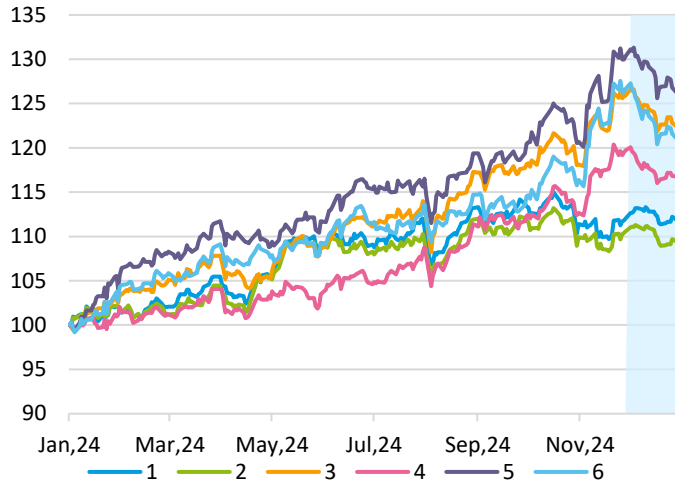
The STOXX Minimum Variance indices come in two versions. A constrained version has similar exposure to its market-capitalization-weighted benchmark but with lower risk. The unconstrained version, on the other hand, has more freedom to fulfill its [minimum variance mandate](#) within the same universe of stocks.

## Risk and return characteristics

|                                       | Return (%) |      |      |      |      |      | Annualized volatility (%) |      |      |     |      |      |
|---------------------------------------|------------|------|------|------|------|------|---------------------------|------|------|-----|------|------|
|                                       | EUR        |      |      | USD  |      |      | EUR                       |      |      | USD |      |      |
|                                       | 1M         | YTD  | 1Y   | 1M   | YTD  | 1Y   | 1M                        | YTD  | 1Y   | 1M  | YTD  | 1Y   |
| 1. STOXX Europe 600 MV                | 0.2        | 12.1 | 12.1 | -1.8 | 5.1  | 5.1  | 5.1                       | 7.7  | 7.7  | 8.9 | 10.1 | 10.1 |
| 2. STOXX Europe 600 MV Unconstrained  | -0.8       | 10.0 | 10.0 | -2.8 | 3.1  | 3.1  | 4.7                       | 7.3  | 7.3  | 8.4 | 9.7  | 9.7  |
| 3. STOXX Global 1800 MV               | -2.6       | 23.4 | 23.4 | -4.5 | 15.6 | 15.6 | 7.9                       | 9.1  | 9.1  | 7.7 | 8.2  | 8.2  |
| 4. STOXX Global 1800 MV Unconstrained | -2.2       | 18.2 | 18.2 | -4.1 | 10.8 | 10.8 | 6.1                       | 8.4  | 8.4  | 6.0 | 7.6  | 7.6  |
| 5. STOXX USA 900 MV                   | -2.9       | 28.5 | 28.5 | -4.8 | 20.4 | 20.4 | 10.5                      | 10.8 | 10.8 | 9.5 | 8.7  | 8.7  |
| 6. STOXX USA 900 MV Unconstrained     | -4.2       | 24.0 | 24.0 | -6.0 | 16.2 | 16.2 | 10.4                      | 10.2 | 10.2 | 8.9 | 8.1  | 8.1  |

Risk and return performance figures for STOXX Minimum Variance indices, gross return. Data as of December 31, 2024. Source: STOXX.

## Index and volatility performance



## Dividend indices

### Key points

[Dividend strategies](#) also showed losses in the month that ended.

The [STOXX® Global Maximum Dividend 40 index](#) selects only the highest-dividend-yielding stocks. The [STOXX® Global Select Dividend 100 index](#), meanwhile, tracks companies with sizeable dividends but also applies a quality filter such as a history of stable payments. The [STOXX® Global ESG-X Select Dividend 100 index](#) targets the highest-yielding stocks within universes screened for responsible investment criteria.

The [STOXX® Global Select 100 EUR index](#) blends increasing dividend yields with low volatility and is calculated in euros.

### Risk and return characteristics

|  | Return (%) |      |      |      |     |     | Annualized volatility (%) |      |      |      |      |      |
|--|------------|------|------|------|-----|-----|---------------------------|------|------|------|------|------|
|  | EUR        |      |      | USD  |     |     | EUR                       |      |      | USD  |      |      |
|  | 1M         | YTD  | 1Y   | 1M   | YTD | 1Y  | 1M                        | YTD  | 1Y   | 1M   | YTD  | 1Y   |
| 1. STOXX Global Maximum Dividend 40 <sup>1</sup> | 0.0        | 6.8  | 6.8  | -1.9 | 0.1 | 0.1 | 9.8                       | 11.1 | 11.1 | 12.4 | 13.5 | 13.5 |
| 2. STOXX Global Select Dividend 100              | -1.3       | 15.1 | 15.1 | -3.3 | 7.9 | 7.9 | 7.6                       | 9.6  | 9.6  | 9.9  | 10.7 | 10.7 |
| 3. STOXX Global ESG-X Select Dividend 100        | -0.9       | 17.1 | 17.1 | -2.9 | 9.7 | 9.7 | 7.0                       | 9.4  | 9.4  | 9.9  | 10.6 | 10.6 |
| 4. STOXX Global Select 100 EUR                   | -1.6       | 12.3 | 12.3 |      |     |     | 6.0                       | 7.1  | 7.1  |      |      |      |

Risk and return performance figures for STOXX Dividend indices, gross return except when shown. Data as of December 31, 2024. Source: STOXX.

### Index and volatility performance

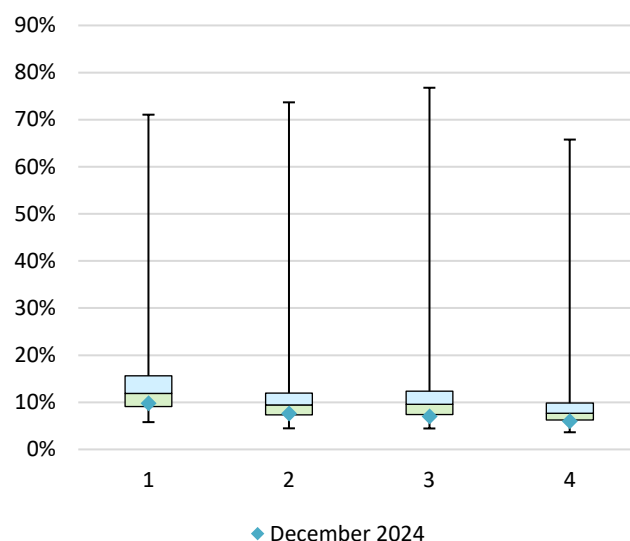
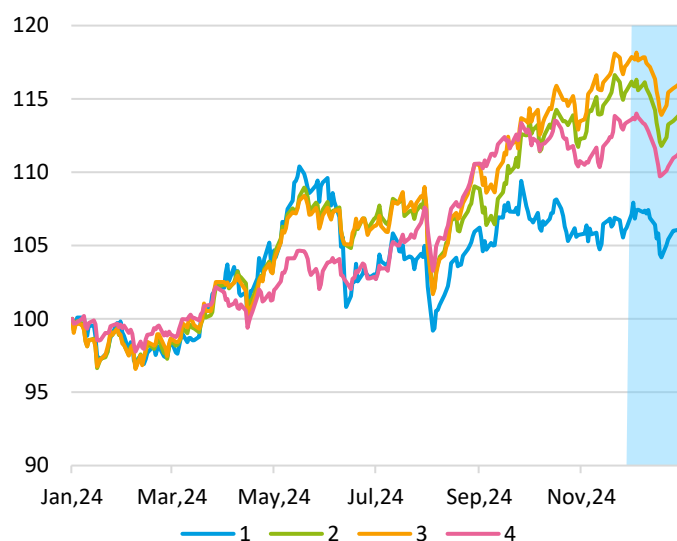


Figure 35: Annual price performance, EUR net return for 1; EUR gross return for 2-4. Jan. 2024 – Dec. 2024. Shaded area: Dec. 2024. Source: STOXX.

Figure 36: Monthly annualized volatility analysis. EUR net return for 1; EUR gross return for 2-4. Apr. 2012 – Dec. 2024. Source: STOXX.

<sup>1</sup> EUR net return and USD net return used for STOXX Maximum Dividend 40.

## Volatility indices

### Key points

European equity volatility was unchanged in December, as measured by the VSTOXX® index. The [VDAX-New®](#) index and the [EURO STOXX 50® Volatility of Volatility \(V-VSTOXX\)](#) index, on the other hand, increased.

The VSTOXX and VDAX measure the implied volatility of EURO STOXX 50 index and DAX index options traded on Eurex, respectively, across their entire expiration curve. The V-VSTOXX measures the implied volatility of options on VSTOXX futures traded on Eurex, hence reflecting expectations regarding the volatility of volatility. All three are significantly lower than their March 2020 peaks. The VSTOXX, for example, rose to 86 in March 2020.

### Risk and return characteristics

|             | Index Level |      |       | Correlation |      |
|-------------|-------------|------|-------|-------------|------|
|             | T           | T-1M | T-12M | 1M          | 1Y   |
| 1. VSTOXX   | 17.0        | 17.0 | 13.6  | -0.7        | -0.7 |
| 2. V-VSTOXX | 93.3        | 85.6 | 84.2  | -0.7        | -0.6 |
| 3. VDAX     | 15.6        | 14.6 | 13.5  | -0.6        | -0.7 |

Index levels for STOXX and DAX Volatility indices. Correlation for VSTOXX and V-VSTOXX compared with EURO STOXX 50 price return, and VDAX relative to DAX gross return. Data as of December 31, 2024. Source: STOXX.

### Index and volatility performance

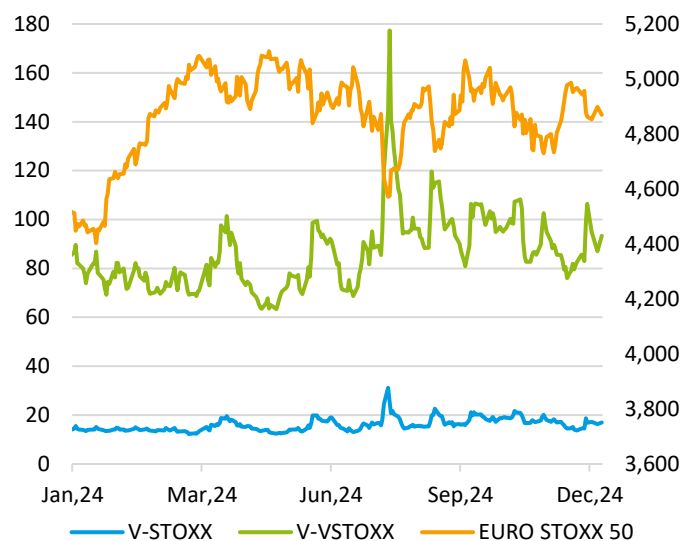


Figure 37: V-STOXX and V-VSTOXX (primary axis), EURO STOXX 50 price return index (secondary axis). Jan. 2024 – Dec. 2024. Source: STOXX.

Figure 38: VDAX (primary axis), DAX gross return index (secondary axis). Jan. 2024 – Dec. 2024. Source: STOXX.

**Disclaimer**

This document is published for informational purposes only and does not constitute investment advice or an offer to sell or the solicitation of an offer to buy any security of any entity in any jurisdiction.

Although the information herein is believed to be reliable and has been obtained from sources believed to be reliable, we make no representation or warranty, expressed or implied, with respect to the fairness, correctness, accuracy, reasonableness or completeness of such information.

No guarantee is made that the information in this report is accurate or complete, and no warranties are made with regard to the results to be obtained from its use. STOXX Ltd. will not be liable for any loss or damage resulting from information obtained from this report. Furthermore, past performance is not necessarily indicative of future results. Exposure to an asset class, a sector, a geography or a strategy represented by an index can be achieved either through a replication of the list of constituents and their respective weightings or through investable instruments based on that index. STOXX Ltd. does not sponsor, endorse, sell, promote or manage any investment product that seeks to provide an investment return based on the performance of any index. STOXX Ltd. makes no assurance that investment products based on any STOXX index will accurately track the performance of the index itself or return positive performance.

**About STOXX**

STOXX® and DAX® indices comprise a global and comprehensive family of more than 18,000 strictly rules-based and transparent indices. Best known for the leading European equity indices EURO STOXX 50®, STOXX® Europe 600 and DAX®, the portfolio of index solutions consists of total market, benchmark, blue-chip, sustainability, thematic and factor-based indices covering a complete set of world, regional and country markets.

STOXX and DAX indices are licensed to more than 550 companies around the world for benchmarking purposes and as underlyings for ETFs, futures and options, structured products, and passively managed investment funds.

STOXX Ltd., part of the ISS STOXX group of companies, is the administrator of the STOXX and DAX indices under the European Benchmark Regulation.

The ISS STOXX indices ("Indices") are owned and administered by STOXX Ltd. Environmental, social and governance ratings, scores and other analytical assessments, which may be used as an input to some Indices, are produced by Institutional Shareholder Services Inc. ("ISS"). Both STOXX Ltd. and ISS are wholly-owned subsidiaries of ISS STOXX GmbH. ISS is a Registered Investment Adviser under the Investment Advisers Act of 1940. Except with respect to any applicable products or services from ISS, neither STOXX Ltd. nor any of its products or services recommends, endorses, approves or otherwise expresses any opinion regarding any issuer, securities, financial products or instruments or trading strategies and the Indices offered by STOXX Ltd. do not constitute investment advice or a recommendation to make (or refrain from making) any kind of investment decision and may not be relied on as such.

This document has not been submitted to, nor received approval from, the United States Securities and Exchange Commission or any other regulatory body.