

# SDI ASSET OWNER PLATFORM

Gert-Jan Sikking

PGGM

9 December, 2020



SDI  
ASSET  
OWNER  
PLATFORM



SUSTAINABLE  
DEVELOPMENT **GOALS**

# SUSTAINABLE DEVELOPMENT INVESTMENTS

Focus on solutions

The AOP consists of asset owners who invest in solutions that contribute to the UN Sustainable Development Goals. These investments meet our financial risk and return requirements and support the generation of positive social and/or environmental impact through their products and services, or at times through acknowledged transformational leadership. We distinguish between investments where impact has, and those where it has not, been measured and stimulate the latter to report on measurable impacts.



# PGGM INTEGRATED REPORT 2019

SDG allocation total investment portfolio



PGGM Public and Private Markets

PFZW goals 2025:

- 20% AUM SDI
- Double the impact measured



# POLLING

Question: Do you have plans to align investments portfolio's to SDGs?

Answer: Yes or No



# POLLING

Question: Which SDG goals do you consider the most important to align to?

Answer 1: SDG 2: Zero Hunger

Answer 2: SDG 3: Good Health and Wellbeing

Answer 3: SDG 7: affordable and clean energy

Answer 4: Other SDGs



# SDI AOP: ASSET OWNER-LED, AI INSIDE AND GLOBAL REACH

Our Operating Organisation is designed to enable our goal: providing a SDI standard

## Three-layer operating organisation

### Clear governance & credibility

The SDI AOP Design Authority (a separate legal entity) establishes and maintains the taxonomy of solutions that contribute to the SDGs. It decides on the rules for identifying SDIs. It provides credibility and continuity.



Design Authority  
Asset owners  
defining the SDI taxonomy



### Technology & data platform

Entis, as data- and software technology partner, translates these rules into an SDI classification making use of structured and unstructured data. Artificial intelligence combined with human intelligence, provides transparency, scale and continuous improvement of the SDI classification.

Technology platform



### Professional global service

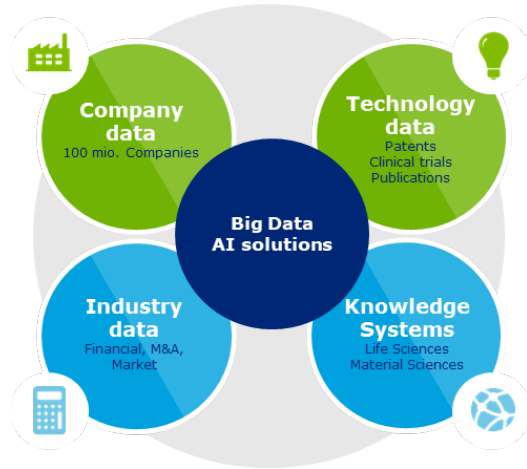
Axioma will be the distributor of the SDI product, providing secure access to the data and first line support globally. It is selected as a partner for its global network and expertise for distribution and further development of our (future) product or derived products.

Global Distributor



# A STANDARD FOR INVESTING INTO THE SDGs

Translating the definition, with the help of data, into actionable insights



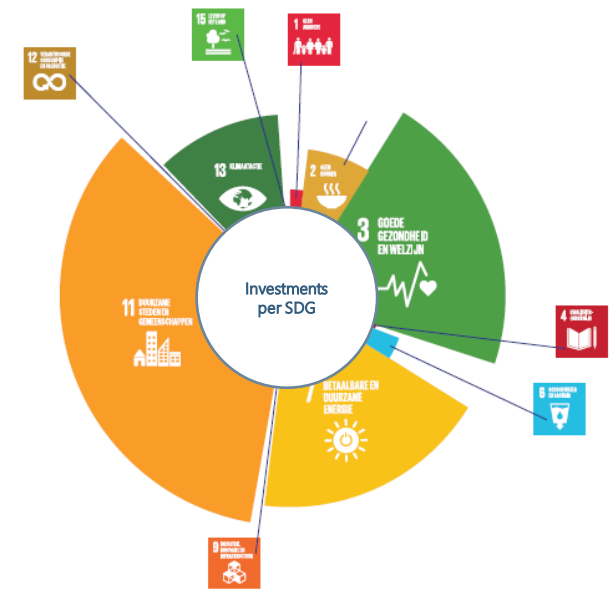
**Data Company**

Company name: [Name]  
 Company identifier: [ID]  
 SDI status: [Status]  
 SDI confidence: [Confidence]  
 SDI coverage: [Coverage]  
 SDI data sources: [Sources]

Category	Value
Company name	[Name]
Company identifier	[ID]
SDI status	[Status]
SDI confidence	[Confidence]
SDI coverage	[Coverage]
SDI data sources	[Sources]

**Koblen Corporation - SDI contribution**

Category	Value
Company name	[Name]
Company identifier	[ID]
SDI status	[Status]
SDI confidence	[Confidence]
SDI coverage	[Coverage]
SDI data sources	[Sources]





# SUSTAINABLE DEVELOPMENT GOALS

Contributions through product & services vs. operations & conduct



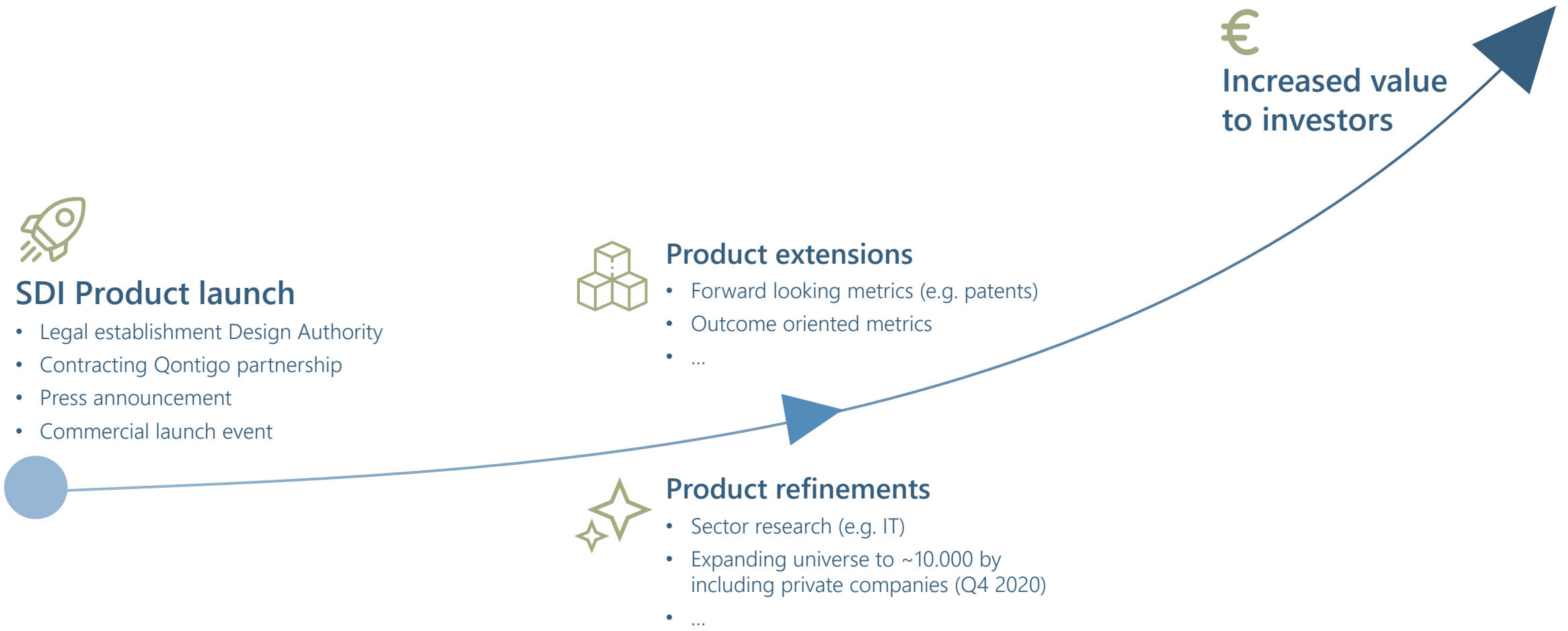
- P** Contribution through product & services (solutions)
- O** Contribution through operations & conduct





# PRODUCT ROADMAP

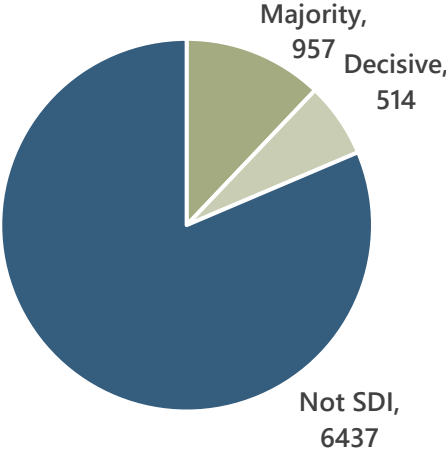
Increasing the value for investors by continuously refining and extending the product



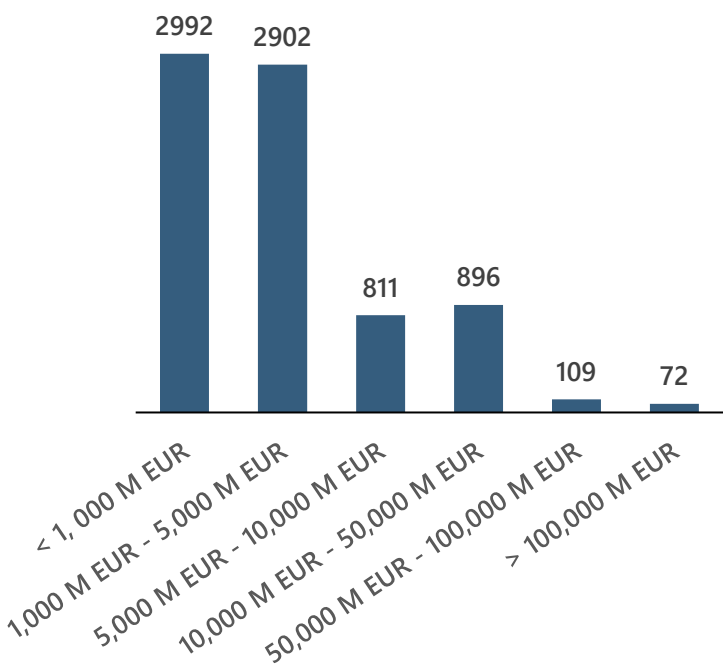
# SDI UNIVERSE COVERAGE

Additional statistics

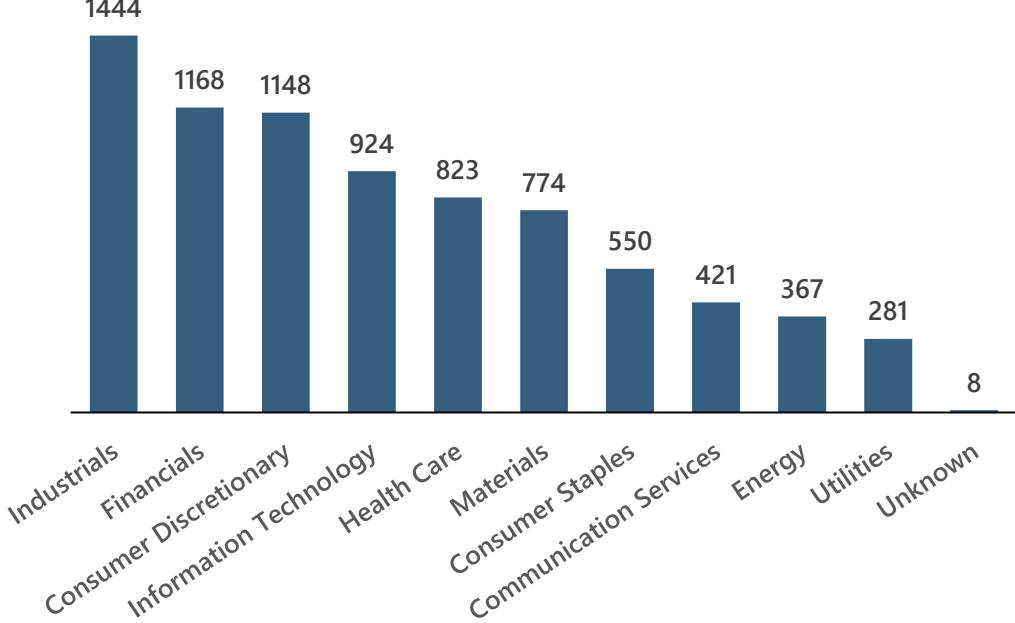
Company classification



Company overview by market cap\*  
Million EUR



Companies by sector



\* Excluding companies for which market cap data wasn't available



# THE OFFERING IS UNIQUELY POSITIONED IN THE MARKET

1

**Alignment**  
with large asset owners  
(credibility)

2

**Broad coverage**  
of global capital markets  
portfolio

3

**Focus**  
on companies' product or  
service-related  
contributions to the SDGs  
(i.e. not ESG)

4

**Objectivity**  
as it is based on financial  
metrics (revenues)

5

**Transparency**  
with large asset owners  
(credibility)

6

**Rule-based and  
auditable  
classification**

7

**Continuous  
improvement and  
efficiency**  
through machine learning

8

**Use of unstructured  
data**  
through artificial  
intelligence / natural  
language processing

9

**Standard-setting with  
large asset owners**  
for accelerated market  
adoption of Sustainable  
Development  
Investments and enhanced  
engagement with  
companies, regulators and  
other stakeholders

10

**Opportunities to shape  
the product  
development agenda**  
e.g. for further  
development of companies'  
SDG-specific operations;  
future contributions;  
measurement of outcomes

